

Product datasheet for **TP322113**

POLE2 (NM_002692) Human Recombinant Protein

Product data:

Product Type:	Recombinant Proteins
Description:	Recombinant protein of human polymerase (DNA directed), epsilon 2 (p59 subunit) (POLE2), 20 µg
Species:	Human
Expression Host:	HEK293T
Expression cDNA Clone or AA Sequence:	>RC222113 protein sequence Red =Cloning site Green =Tags(s)

MAPERLRSRALSAFKLRGLLLRGEAIKYLTEALQSISELELEDKLEKIINAVEKQPLSSNMIERSWEAA
VQEQSQSVDEITIEHVFNIIIGAFDIPRFVYNSERKKFLPLLMTNHPAPNLFGTPRDKAEMFRERYTILHQR
THRHELFTPPVIGSHPDSESGSKFQLKTIETLLGSTTKIGDAIVLGMITQLKEGKFFLEDPTGTVQLDSLK
AQFHSGLYTEACFVLAEGWFEDQVFHVNAFGFPPTPEPSSTTRAYYGNINFFGGPSNTSVKTS AKLKQLEE
ENKDAMFVFLSDVWLDQVEVLEKLRIMFAGYSPAPPTCFILCGNFSSAPYGKNQVQALKDSLKTLADIIC
EYPDIHQSSRFVFPDPEDPGFGSILPRPPLAESITNEFRQRPFSVFTTNP CRIQYCTQEITVFREDLV
NKMCRNCVRFPSNLAIPNHFKTILSQGHLTPLPLYVCPVYWAYDYALRVYPVDPDLLVIADKYDPFTTT
NTECLCINPGSFP RSGFSFKVFYPSNKTVEDSKLQGF

TRTRPLEQKLISEEDLAANDILDYKDDDDKV

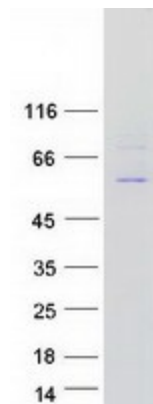
Tag:	C-Myc/DDK
Predicted MW:	59.4 kDa
Concentration:	>0.05 µg/µL as determined by microplate BCA method
Purity:	> 80% as determined by SDS-PAGE and Coomassie blue staining
Buffer:	25 mM Tris-HCl, 100 mM glycine, pH 7.3, 10% glycerol
Preparation:	Recombinant protein was captured through anti-DDK affinity column followed by conventional chromatography steps.
Note:	For testing in cell culture applications, please filter before use. Note that you may experience some loss of protein during the filtration process.
Storage:	Store at -80°C.



[View online »](#)

Stability:	Stable for 12 months from the date of receipt of the product under proper storage and handling conditions. Avoid repeated freeze-thaw cycles.
RefSeq:	NP_002683
Locus ID:	5427
UniProt ID:	P56282
RefSeq Size:	1861
Cytogenetics:	14q21.3
RefSeq ORF:	1581
Synonyms:	DPE2
Summary:	DNA polymerase epsilon, which is involved in DNA repair and replication, is composed of a large catalytic subunit and a small accessory subunit. The protein encoded by this gene represents the small subunit (B). Defects in this gene have been linked to colorectal cancer and to combined immunodeficiency. [provided by RefSeq, Jan 2017]
Protein Pathways:	Base excision repair, DNA replication, Metabolic pathways, Nucleotide excision repair, Purine metabolism, Pyrimidine metabolism

Product images:



Coomassie blue staining of purified POLE2 protein (Cat# TP322113). The protein was produced from HEK293T cells transfected with POLE2 cDNA clone (Cat# [RC222113]) using MegaTran 2.0 (Cat# [TT210002]).