

## Product datasheet for **TP322073**

### **C1orf226 (NM\_001085375) Human Recombinant Protein**

#### Product data:

Product Type:	Recombinant Proteins
Description:	Recombinant protein of human chromosome 1 open reading frame 226 (C1orf226), 20 µg
Species:	Human
Expression Host:	HEK293T
Expression cDNA Clone or AA Sequence:	>RC222073 representing NM_001085375 <b>Red</b> =Cloning site <b>Green</b> =Tags(s)
	 MFENLNTALTPKLQASRSFPHLSKPVAPGSAPLGSGEPPGGLWVGSSQHLKNLGKAMGAKVNDFLRRKE PSSLGSVGTEINKTAGAQLASGTDAAPEAWLEDERSVLQETFPRLDPPPPITRKRTPRALKTTQDMLIS SQPVLSSLEYGTEPSGQAQDSAPTAQPDVPADASQPEATMEREERGKVLPNGEVLSVPDLIHKDSQDE SKLKMTECRRASSPSLIERNFGKLSLSPISLAESWEDGSPPPQARTSSLDNEGPHPDLLSFE  <b>TRTRPLEQKLISEEDLAANDILDYKDDDDKV</b>
Tag:	C-Myc/DDK
Predicted MW:	28.9 kDa
Concentration:	>0.05 µg/µL as determined by microplate BCA method
Purity:	> 80% as determined by SDS-PAGE and Coomassie blue staining
Buffer:	25 mM Tris-HCl, 100 mM glycine, pH 7.3, 10% glycerol
Preparation:	Recombinant protein was captured through anti-DDK affinity column followed by conventional chromatography steps.
Note:	For testing in cell culture applications, please filter before use. Note that you may experience some loss of protein during the filtration process.
Storage:	Store at -80°C.
Stability:	Stable for 12 months from the date of receipt of the product under proper storage and handling conditions. Avoid repeated freeze-thaw cycles.
RefSeq:	<a href="#">NP_001078844</a>
Locus ID:	400793
UniProt ID:	<a href="#">A1L170</a>



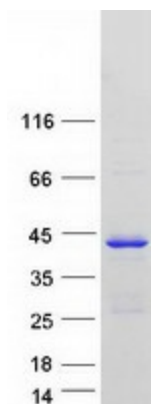
[View online »](#)

RefSeq Size: 4146

Cytogenetics: 1q23.3

RefSeq ORF: 816

### Product images:



Coomassie blue staining of purified C1orf226 protein (Cat# TP322073). The protein was produced from HEK293T cells transfected with C1orf226 cDNA clone (Cat# [RC222073]) using MegaTran 2.0 (Cat# [TT210002]).