

## Product datasheet for **TP322058L**

### SLC34A3 (NM\_080877) Human Recombinant Protein

#### Product data:

Product Type:	Recombinant Proteins
Description:	Purified recombinant protein of Homo sapiens solute carrier family 34 (sodium phosphate), member 3 (SLC34A3), 1 mg
Species:	Human
Expression Host:	HEK293T
Expression cDNA Clone or AA Sequence:	>RC222058 representing NM_080877 <b>Red</b> =Cloning site <b>Green</b> =Tags(s)

MPSSLPGSQVPHPHTLDAVDLVEKTLRNEGTSAPVLEEGDTPWTLTPQLKDTSPWKELRVAGRLRRVA  
GSVLKACGLLGSLYFFICSLDVLSSAFQLLGSKVAGDIFKDNVLSNPVAGLVIGVLVLTALVQSSSTSS  
IVSMVAAKLLTVRVSVPPIIMGVNVGTSITSLVSMASGDRDEFQRAFSGSAVHGIFNWLTVLVLPLE  
SATALLERLSELALGAASLTTPRAQAPDILKVLTKPLTHLIVQLDSDMIMSSATGNATNSSLIKHWCCTTG  
QPTQENSSCGAFGPCTEKNSTAPADRLPCRHLFAGTELTDLAVGCILLAGSLLVLCGLVLIVKLLNSVL  
RGRVAQVVRTVINADFPFPLGWLGGYLAVLAGAGLTFALQSSSVFTA AAVPLMGVGVISLDRAYPLLLGS  
NIGTTTTALLAALASPADRMLSALQVALIHFFFNLAGILLWYLPALRLPIPLARHFGVVTARYRWVAGV  
YLLGLFLLPLAAFGLSLAGGMVLA AVGGPLVGLVLLVILVTVLQRRRPAWLPVRLRSWAWLPVWLHSL  
PWDRLVTRCCPCNVCSPPKATTKEAYCYENPEILASQQL

**TRTRPLEQKLISEEDLAANDILDYKDDDDKV**

Tag:	C-Myc/DDK
Predicted MW:	63.3 kDa
Concentration:	>0.05 µg/µL as determined by microplate BCA method
Purity:	> 80% as determined by SDS-PAGE and Coomassie blue staining
Buffer:	25 mM Tris-HCl, 100 mM glycine, pH 7.3, 10% glycerol
Preparation:	Recombinant protein was captured through anti-DDK affinity column followed by conventional chromatography steps.
Note:	For testing in cell culture applications, please filter before use. Note that you may experience some loss of protein during the filtration process.
Storage:	Store at -80°C.



[View online »](#)

**Stability:** Stable for 12 months from the date of receipt of the product under proper storage and handling conditions. Avoid repeated freeze-thaw cycles.

**RefSeq:** [NP\\_543153](#)

**Locus ID:** 142680

**UniProt ID:** [Q8N130](#)

**RefSeq Size:** 2124

**Cytogenetics:** 9q34.3

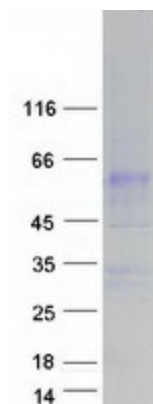
**RefSeq ORF:** 1797

**Synonyms:** HHRH; NPTIIc

**Summary:** This gene encodes a member of SLC34A transporter family of proteins, and is expressed primarily in the kidney. It is involved in transporting phosphate into cells via sodium cotransport in the renal brush border membrane, and contributes to the maintenance of inorganic phosphate concentration in the kidney. Mutations in this gene are associated with hereditary hypophosphatemic rickets with hypercalciuria. Alternatively spliced transcript variants varying in the 5' UTR have been found for this gene.[provided by RefSeq, Apr 2010]

**Protein Families:** Transmembrane

### Product images:



Coomassie blue staining of purified SLC34A3 protein (Cat# [TP322058]). The protein was produced from HEK293T cells transfected with SLC34A3 cDNA clone (Cat# [RC222058]) using MegaTran 2.0 (Cat# [TT210002]).