

Product datasheet for **TP322047**

CORO1B (NM_001018070) Human Recombinant Protein

Product data:

Product Type:	Recombinant Proteins
Description:	Recombinant protein of human coronin, actin binding protein, 1B (CORO1B), transcript variant 2, 20 µg
Species:	Human
Expression Host:	HEK293T
Expression cDNA Clone or AA Sequence:	>RC222047 protein sequence Red =Cloning site Green =Tags(s)

MSFRKVRQSKFRHVFQGPVKNDQCYEDIRVSRVTWDSTFCAVNPKFLAVIVEASGGGAFVLVPLSKTGR
IDKAYPTVCGHTGPVLDIDWCPHNDEVIASGSEDCVMVWQIPENGLTSPLTEPVVWLEGHTKRVGIIAW
HPTARNVLLSAGCDNVVLIWNVGTAEELYRLDSLHPDLIYNVSWNHNGSLFCSACKDKSVRIIDPRRGLT
VAEREKAHEGARPMRAIFLADGKVFTTGFSRMSERQLALWDPENLEPMALQELDSSNGALLPFYDPDTS
VVYVCGKGDSSIRYFEITEPPYIHFNTFTSKEPQRGMGSMKRGLEVSKCEIARFYKLHERKCEPIVM
TVPRKSDLFQDDLYPDTAGPEAALEAEWVSGRDADPILISLREAYVPSKQRDLKISRRNVLSDSRPAMA
PGSSHLGAPASTTTAADATPSGSLARAGEAGKLEEVMQELRALRALVKEQGDRICRLEEQLGRMENGDA

TRTRPLEQKLISEEDLAANDILDYKDDDDKV

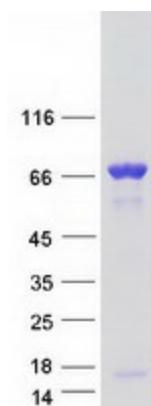
Tag:	C-Myc/DDK
Predicted MW:	54.1 kDa
Concentration:	>0.05 µg/µL as determined by microplate BCA method
Purity:	> 80% as determined by SDS-PAGE and Coomassie blue staining
Buffer:	25 mM Tris-HCl, 100 mM glycine, pH 7.3, 10% glycerol
Preparation:	Recombinant protein was captured through anti-DDK affinity column followed by conventional chromatography steps.
Note:	For testing in cell culture applications, please filter before use. Note that you may experience some loss of protein during the filtration process.
Storage:	Store at -80°C.
Stability:	Stable for 12 months from the date of receipt of the product under proper storage and handling conditions. Avoid repeated freeze-thaw cycles.



[View online »](#)

RefSeq:	NP_001018080
Locus ID:	57175
UniProt ID:	Q9BR76 , A0A024R5K1
RefSeq Size:	1949
Cytogenetics:	11q13.2
RefSeq ORF:	1467
Synonyms:	CORONIN-2
Summary:	Members of the coronin family, such as CORO1B, are WD repeat-containing actin-binding proteins that regulate cell motility (Cai et al., 2005 [PubMed 16027158]).[supplied by OMIM, Mar 2008]

Product images:



Coomassie blue staining of purified CORO1B protein (Cat# TP322047). The protein was produced from HEK293T cells transfected with CORO1B cDNA clone (Cat# [RC222047]) using MegaTran 2.0 (Cat# [TT210002]).