

## Product datasheet for TP322038M

### SUN2 (NM\_015374) Human Recombinant Protein

#### Product data:

Product Type:	Recombinant Proteins
Description:	Recombinant protein of human unc-84 homolog B (C. elegans) (UNC84B), 100 µg
Species:	Human
Expression Host:	HEK293T
Expression cDNA Clone or AA Sequence:	>RC222038 representing NM_015374 Red=Cloning site Green=Tags(s)

MSRRSQRQLTRYSGDDDDGSSSSGGSSVAGSQSTLFDKDSPLRRTLKRKSSNMKRLSPAPQLGPSSDAHTSYYS  
 SESLVHESWFPPRSSLEELHGDANWGEDLRVRRRRGTGGSESSRASGLVGRKATEDFLGSSSSGYSEDDY  
 VGYSVDVQSSSSRLRSVSRAGSLLWMVATSPGRLFRLLYWWAGTTWYRLTTAASLLDVFVLRFRFSSL  
 KTFLWFLLPLLLLTCLTYGAWYFYPYGLQTFHPALVSWWAAKDSRRPDEGWEARDSSPHFQAEQRVMSRV  
 HSLERRLEALAAEFSSNWQKEAMRLERLELRQGAPGQGGGGGLSHEDTLALLEGLVSRREAALKEDFRRE  
 TAARIQEELSALRAEHQQDSEDLFKKIVRASQESEARIQQLKSEWQSMTQESFQESSVKELRRLEDQLAG  
 LQQLAALALKQSSVAEEVGLLPQQIQAVRDDVESQFPAWISQFLARGGGGRVGLLQREEMQAQLRELES  
 KILTHVAEMQGKSAREAAASLSLTLQKEGVIGVTEEQVHHIVKQALQRYSEDRIGLADYALESGGASVIS  
 TRCSETYETKTALLSLFGIPLWYHSQSPRVILQPDVHPGNCWAFQGPQGFVAVRVSARIRPTAVTLEHVP  
 KALSPNSTISSAPKDFAIQGFDEDLQQEGTLLGKFTYDQDGEPIQTFHFQAPTMATYQVVELRILTNGH  
 PEYTCIYRFRVHGEPAH

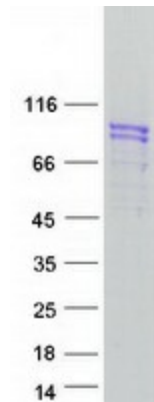
TRTRPLEQKLISEEDLAANDILDYKDDDDKV

Tag:	C-Myc/DDK
Predicted MW:	80.1 kDa
Concentration:	>0.05 µg/µL as determined by microplate BCA method
Purity:	> 80% as determined by SDS-PAGE and Coomassie blue staining
Buffer:	25 mM Tris-HCl, 100 mM glycine, pH 7.3, 10% glycerol
Preparation:	Recombinant protein was captured through anti-DDK affinity column followed by conventional chromatography steps.
Note:	For testing in cell culture applications, please filter before use. Note that you may experience some loss of protein during the filtration process.
Storage:	Store at -80°C.



[View online »](#)

<b>Stability:</b>	Stable for 12 months from the date of receipt of the product under proper storage and handling conditions. Avoid repeated freeze-thaw cycles.
<b>RefSeq:</b>	<a href="#">NP_056189</a>
<b>Locus ID:</b>	25777
<b>UniProt ID:</b>	<a href="#">Q9UH99</a> , <a href="#">A0A024R1P7</a> , <a href="#">B4E2A6</a>
<b>RefSeq Size:</b>	3908
<b>Cytogenetics:</b>	22q13.1
<b>RefSeq ORF:</b>	2151
<b>Synonyms:</b>	UNC84B
<b>Summary:</b>	SUN1 (MIM 607723) and SUN2 are inner nuclear membrane (INM) proteins that play a major role in nuclear-cytoplasmic connection by formation of a 'bridge' across the nuclear envelope, known as the LINC complex, via interaction with the conserved luminal KASH domain of nesprins (e.g., SYNE1; MIM 608441) located in the outer nuclear membrane (ONM). The LINC complex provides a direct connection between the nuclear lamina and the cytoskeleton, which contributes to nuclear positioning and cellular rigidity (summary by Haque et al., 2010 [PubMed 19933576]).[supplied by OMIM, Nov 2010]
<b>Protein Families:</b>	Transmembrane

**Product images:**

Coomassie blue staining of purified SUN2 protein (Cat# [TP322038]). The protein was produced from HEK293T cells transfected with SUN2 cDNA clone (Cat# [RC222038]) using MegaTran 2.0 (Cat# [TT210002]).