

Product datasheet for TP322038

SUN2 (NM_015374) Human Recombinant Protein

Product data:

Product Type:	Recombinant Proteins
Description:	Recombinant protein of human unc-84 homolog B (C. elegans) (UNC84B), 20 µg
Species:	Human
Expression Host:	HEK293T
Expression cDNA Clone or AA Sequence:	>RC222038 representing NM_015374 Red=Cloning site Green=Tags(s)

MSRRSQRQLTRYSQGDDDDGSSSSGGSSVAGSQSTLFDKDSPLRRTLKRKSSNMKRLSPAPQLGPSSDAHTSYYS
 SESLVHESWFPPRSSLEELHGDANWGEDLRVRRRRGTGGSESSRASGLVGRKATEDFLGSSSSGYSEDDY
 VGYSVDVQSSSSRLRSVSRAGSLLWMVATSPGRLFRLLYWWAGTTWYRLTTAASLLDVFVLTTRFSSL
 KTFLWFLLPLLLLTCLTYGAWYFYPYGLQTFHPALVSWWAAKDSRRPDEGWEARDSSPHFQAEQRVMSRV
 HSLERRLEALAAEFSSNWQKEAMRLERLELRQGAPGQGGGGGLSHEDTLALLEGLVSRREAALKEDFRRE
 TAARIQEELSALRAEHQQDSEDLFKKIVRASQESEARIQQLKSEWQSMTQESFQESSVKELRRLEDQLAG
 LQQLAALALKQSSVAEEVGLLPQQIQAVRDDVESQFPAWISQFLARGGGGRVGLLQREEMQAQLRELES
 KILTHVAEMQGKSAREAAASLSLTLQKEGVIGVTEEQVHHIVKQALQRYSEDRIGLADYALESGGASVIS
 TRCSETYETKTALLSLFGIPLWYHSQSPRVILQPDVHPGNCWAFQGPQGFAVRLSARIRPTAVTLEHVP
 KALSPNSTISSAPKDFAIQGFDEDLQQEGTLLGKFTYDQDGEPIQTFHFQAPTMATYQVVELRILTNGH
 PEYTCIYRFRVHGEPAH

TRTRPLEQKLISEEDLAANDILDYKDDDDKV

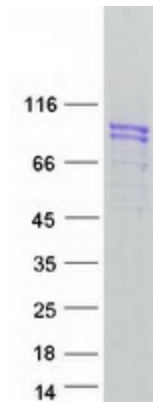
Tag:	C-Myc/DDK
Predicted MW:	80.1 kDa
Concentration:	>0.05 µg/µL as determined by microplate BCA method
Purity:	> 80% as determined by SDS-PAGE and Coomassie blue staining
Buffer:	25 mM Tris-HCl, 100 mM glycine, pH 7.3, 10% glycerol
Preparation:	Recombinant protein was captured through anti-DDK affinity column followed by conventional chromatography steps.
Note:	For testing in cell culture applications, please filter before use. Note that you may experience some loss of protein during the filtration process.
Storage:	Store at -80°C.



[View online »](#)

Stability:	Stable for 12 months from the date of receipt of the product under proper storage and handling conditions. Avoid repeated freeze-thaw cycles.
RefSeq:	NP_056189
Locus ID:	25777
UniProt ID:	Q9UH99 , A0A024R1P7 , B4E2A6
RefSeq Size:	3908
Cytogenetics:	22q13.1
RefSeq ORF:	2151
Synonyms:	UNC84B
Summary:	SUN1 (MIM 607723) and SUN2 are inner nuclear membrane (INM) proteins that play a major role in nuclear-cytoplasmic connection by formation of a 'bridge' across the nuclear envelope, known as the LINC complex, via interaction with the conserved luminal KASH domain of nesprins (e.g., SYNE1; MIM 608441) located in the outer nuclear membrane (ONM). The LINC complex provides a direct connection between the nuclear lamina and the cytoskeleton, which contributes to nuclear positioning and cellular rigidity (summary by Haque et al., 2010 [PubMed 19933576]).[supplied by OMIM, Nov 2010]
Protein Families:	Transmembrane

Product images:



Coomassie blue staining of purified SUN2 protein (Cat# TP322038). The protein was produced from HEK293T cells transfected with SUN2 cDNA clone (Cat# [RC222038]) using MegaTran 2.0 (Cat# [TT210002]).