

## Product datasheet for TP322021

### ELMO2 (NM\_182764) Human Recombinant Protein

#### Product data:

Product Type:	Recombinant Proteins
Description:	Recombinant protein of human engulfment and cell motility 2 (ELMO2), transcript variant 2, 20 µg
Species:	Human
Expression Host:	HEK293T
Expression cDNA Clone or AA Sequence:	>RC222021 representing NM_182764 Red=Cloning site Green=Tags(s)

MPPPSDIVKVAIEWPGANAQLEIDQKRPLASIIKEVCDGWSLPNPEYYTLRYADGPPQLYITEQTRSDIK  
NGTILQLAISPSRAARQLMERTQSSNMETRLDAMKELAKLSADVTFATEFINMDGIIVLTRLVESGTKLL  
SHYSEMLAFTLTAFLLEMDHGIVSWDMVSITFIKQIAGYVSQPMVDVSILQRSLAILESMVLNSQSLYQK  
IAEITVGLQLISHLQVSNQEIQTYAIALINALFLKAPEDKRQDMANAFQKHLRSIILNHVIRGNRPIKT  
EMAHQLYVLQVLTFNLLERMMTKMDPNDQAQRDIIFELRRIAFDAESDPSNAPGSGTEKRKAMYTKDYK  
MLGFTNHINPAMDFTQTPPGMLALDNMLYLAKVHQDTYIRIVLENSSREDKHECPFGRSAIELTKMLCEI  
LQVGELPNEGRNDYHPMFFTHDRAFEELFGICIQLLNKTWKEMRATAEDFNKVMQVVREQITRALPSKPN  
SLDQFKSKLRSLSYSEILRLRQSERMSQDDFQSPPIVELREKIQPEILELIKQQRNLRLCEGSSFRKIGN  
RRRQERFWYCRLALNHKVLHYGDLDDNPQGEVTFESLQEIPVADIKAVTGKDCPHMKEKSALKQNKVEV  
LELAFSILYDPDETLNFIAPNKYEYCIWIDGLSALLGKDMSELTKSDLDTLLSMEMKLRLLDLENIQIP  
EAPPPIPKEPSSYDFVYHYG

TRTRPLEQKLISEEDLAANDILDYKDDDDKV

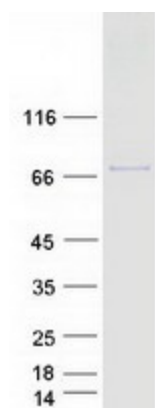
Tag:	C-Myc/DDK
Predicted MW:	82.4 kDa
Concentration:	>0.05 µg/µL as determined by microplate BCA method
Purity:	> 80% as determined by SDS-PAGE and Coomassie blue staining
Buffer:	25 mM Tris-HCl, 100 mM glycine, pH 7.3, 10% glycerol
Preparation:	Recombinant protein was captured through anti-DDK affinity column followed by conventional chromatography steps.
Note:	For testing in cell culture applications, please filter before use. Note that you may experience some loss of protein during the filtration process.



[View online »](#)

<b>Storage:</b>	Store at -80°C.
<b>Stability:</b>	Stable for 12 months from the date of receipt of the product under proper storage and handling conditions. Avoid repeated freeze-thaw cycles.
<b>RefSeq:</b>	<a href="#">NP_877496</a>
<b>Locus ID:</b>	63916
<b>UniProt ID:</b>	<a href="#">Q96JJ3</a>
<b>RefSeq Size:</b>	3596
<b>Cytogenetics:</b>	20q13.12
<b>RefSeq ORF:</b>	2160
<b>Synonyms:</b>	CED-12; Ced-12A; CED12; ELMO-2; VMPI
<b>Summary:</b>	The protein encoded by this gene interacts with the dedicator of cyto-kinesis 1 protein. Similarity to a <i>C. elegans</i> protein suggests that this protein may function in phagocytosis of apoptotic cells and in cell migration. Alternative splicing results in multiple transcript variants. [provided by RefSeq, Dec 2015]

### Product images:



Coomassie blue staining of purified ELMO2 protein (Cat# TP322021). The protein was produced from HEK293T cells transfected with ELMO2 cDNA clone (Cat# [RC222021]) using MegaTran 2.0 (Cat# [TT210002]).