

Product datasheet for TP322012L

SHARPIN (NM_030974) Human Recombinant Protein

Product data:

Product Type:	Recombinant Proteins
Description:	Recombinant protein of human SHANK-associated RH domain interactor (SHARPIN), 1 mg
Species:	Human
Expression Host:	HEK293T
Expression cDNA Clone or AA Sequence:	>RC222012 representing NM_030974 Red =Cloning site Green =Tags(s)
	<p>MAPPAGGAAAAASDLGSAAVLLAVHAAVRPLGAGPDAAEQLRRLQLSADPERPGRFRLELLGAGPGAVNL EWPLESVSYTIRGPTQHELQPPPGGPGTLSLHFLNPQEAQRWAVLVRGATVEGQNGSKSNSPPALGPEAC PVSLPSPPEASTLKGPPPEADLPRSPGNLTEREELAGSLARAIAGGDEKGAQAQVAAVLAQHRVALSVQLQ EACFPPIRLQVTLEDAASAASAASSAHVALQVHPHCTVAALQEQVSELGFPPAVQRWVIGRCLCVPE RSLASYGVRQDGDPAFLYLLSAPREAPATGSPQHPQKMDGELGRLFPPSLGLPPGPQPAASSLPSPLQP SWSCPSCTFINAPDRPGCEMCSTQRPCTWDPLAAAST</p> <p>TRTRPLEQKLISEEDLAANDILDYKDDDDKV</p>
Tag:	C-Myc/DDK
Predicted MW:	39.8 kDa
Concentration:	>0.05 µg/µL as determined by microplate BCA method
Purity:	> 80% as determined by SDS-PAGE and Coomassie blue staining
Buffer:	25 mM Tris-HCl, 100 mM glycine, pH 7.3, 10% glycerol
Preparation:	Recombinant protein was captured through anti-DDK affinity column followed by conventional chromatography steps.
Note:	For testing in cell culture applications, please filter before use. Note that you may experience some loss of protein during the filtration process.
Storage:	Store at -80°C.
Stability:	Stable for 12 months from the date of receipt of the product under proper storage and handling conditions. Avoid repeated freeze-thaw cycles.
RefSeq:	NP_112236
Locus ID:	81858



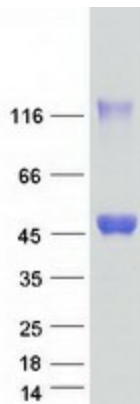
[View online »](#)

UniProt ID: [Q9H0F6](#)
RefSeq Size: 1765
Cytogenetics: 8q24.3
RefSeq ORF: 1161
Synonyms: SIPL1

Summary: Component of the LUBAC complex which conjugates linear polyubiquitin chains in a head-to-tail manner to substrates and plays a key role in NF-kappa-B activation and regulation of inflammation. LUBAC conjugates linear polyubiquitin to IKBKG and RIPK1 and is involved in activation of the canonical NF-kappa-B and the JNK signaling pathways. Linear ubiquitination mediated by the LUBAC complex interferes with TNF-induced cell death and thereby prevents inflammation. LUBAC is recruited to the TNF-R1 signaling complex (TNF-RSC) following polyubiquitination of TNF-RSC components by BIRC2 and/or BIRC3 and to conjugate linear polyubiquitin to IKBKG and possibly other components contributing to the stability of the complex. Together with OTULIN, the LUBAC complex regulates the canonical Wnt signaling during angiogenesis.[UniProtKB/Swiss-Prot Function]

Protein Families: Druggable Genome

Product images:



Coomassie blue staining of purified SHARPIN protein (Cat# [TP322012]). The protein was produced from HEK293T cells transfected with SHARPIN cDNA clone (Cat# [RC222012]) using MegaTran 2.0 (Cat# [TT210002]).