

Product datasheet for **TP321996M**

Repulsive Guidance Molecule A (RGMA) (NM_020211) Human Recombinant Protein

Product data:

Product Type:	Recombinant Proteins
Description:	Recombinant protein of human RGM domain family, member A (RGMA), 100 µg
Species:	Human
Expression Host:	HEK293T
Expression cDNA Clone or AA Sequence:	>RC221996 representing NM_020211 Red =Cloning site Green =Tags(s)
	<p>MQPPRERLWVTGRAGWMGMGRGAGRSALGFWPTLAFLLCSFPAATSPCKILKCNSEFWSATSGSHAPASD DTPEFCAALRSYALCTRRRTARTCRGDLAYHSAVHGIEDLMSQHNCSKDGPTSQPRLRTLPPAGDSQERSD SPEICHYEKSFHKHSATPNYTHCGLFGDPLHRTFTDRFQTCKVQGAWPLIDNNYLNQVNTNPVLPGSAA TATSKLTIIFKNFQECVDQKVYAEMDELPAAFVDGSKNGGDKHGANSLKITEKVSQGHVEIQAKYIGTT IVVRQVGRYLTFAVRMPEEVVNAVEDWDSQGLYLCLRGCPNQQIDFQAFHTNAEGTGARRLAAASPAPT APETFPYETAVAKCKEKL PVEDLYYQACVFDLLTTGDVNFTLAAYYALEVDKMLHSNKDKLHLYERTRDL PGRAAAGLPLAPRPLL GALVPLLALLPVFCSGP</p> <p>SGPTRRRLEQKLISEEDLAANDILDYKDDDDKV</p>
Tag:	C-Myc/DDK
Predicted MW:	49.2 kDa
Concentration:	>0.05 µg/µL as determined by microplate BCA method
Purity:	> 80% as determined by SDS-PAGE and Coomassie blue staining
Buffer:	25 mM Tris-HCl, 100 mM glycine, pH 7.3, 10% glycerol
Preparation:	Recombinant protein was captured through anti-DDK affinity column followed by conventional chromatography steps.
Note:	For testing in cell culture applications, please filter before use. Note that you may experience some loss of protein during the filtration process.
Storage:	Store at -80°C.
Stability:	Stable for 12 months from the date of receipt of the product under proper storage and handling conditions. Avoid repeated freeze-thaw cycles.
RefSeq:	<u>NP_064596</u>

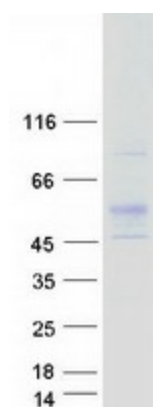


[View online »](#)

Locus ID: 56963
UniProt ID: [Q96B86](#)
RefSeq Size: 3216
Cytogenetics: 15q26.1
RefSeq ORF: 1359
Synonyms: RGM

Summary: This gene encodes a member of the repulsive guidance molecule family. The encoded protein is a glycosylphosphatidylinositol-anchored glycoprotein that functions as an axon guidance protein in the developing and adult central nervous system. This protein may also function as a tumor suppressor in some cancers. Alternate splicing results in multiple transcript variants. [provided by RefSeq, Oct 2009]

Product images:



Coomassie blue staining of purified RGMA protein (Cat# [TP321996]). The protein was produced from HEK293T cells transfected with RGMA cDNA clone (Cat# [RC221996]) using MegaTran 2.0 (Cat# [TT210002]).