

Product datasheet for **TP321996L**

Repulsive Guidance Molecule A (RGMA) (NM_020211) Human Recombinant Protein

Product data:

Product Type: Recombinant Proteins

Description: Recombinant protein of human RGM domain family, member A (RGMA), 1 mg

Species: Human

Expression Host: HEK293T

Expression cDNA Clone or AA Sequence: >RC221996 representing NM_020211

Red=Cloning site **Green**=Tags(s)

MQPPRERLWVTGRAGWMGMGRGAGRSALGFWPTLAFLLCSFPAATSPCKILKCNSEFWSATSGSHAPASD
DTPEFCAALRSYALCTRRRTARTCRGDLAYHSAVHGIEDLMSQHNCSKDGPTSQPRLRTLPPAGDSQERSD
SPEICHYEKSFHKHSATPNYTHCGLFGDPLHRTFTDRFQTCKVQGAWPLIDNNYLNQVNTNTPVLPGSAA
TATSKLTIIFKNFQECVDQKVYAEMDELPAAFVDGSKNGGDKHGANSLKITEKVSQGHVEIQAKYIGTT
IVVRQVGRYLTFAVRMPEEVVNAVEDWDSQGLYLCLRGCPNQQIDFQAFHTNAEGTGARRLAAASPAPT
APETFPYETAVAKCKEKL PVEDLYYQACVFDLLTTGDVNF TLAAYYAL EDVKMLHSNKDKLHLYERTRDL
PGRAAAGLPLAPRPLL GALVPLLALLPVFCSGP

SGPTRRRLEQKLISEEDLAANDILDYKDDDDKV

Tag: C-Myc/DDK

Predicted MW: 49.2 kDa

Concentration: >0.05 µg/µL as determined by microplate BCA method

Purity: > 80% as determined by SDS-PAGE and Coomassie blue staining

Buffer: 25 mM Tris-HCl, 100 mM glycine, pH 7.3, 10% glycerol

Preparation: Recombinant protein was captured through anti-DDK affinity column followed by conventional chromatography steps.

Note: For testing in cell culture applications, please filter before use. Note that you may experience some loss of protein during the filtration process.

Storage: Store at -80°C.

Stability: Stable for 12 months from the date of receipt of the product under proper storage and handling conditions. Avoid repeated freeze-thaw cycles.

RefSeq: [NP_064596](#)

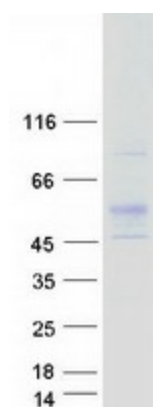


[View online »](#)

Locus ID: 56963
UniProt ID: [Q96B86](#)
RefSeq Size: 3216
Cytogenetics: 15q26.1
RefSeq ORF: 1359
Synonyms: RGM

Summary: This gene encodes a member of the repulsive guidance molecule family. The encoded protein is a glycosylphosphatidylinositol-anchored glycoprotein that functions as an axon guidance protein in the developing and adult central nervous system. This protein may also function as a tumor suppressor in some cancers. Alternate splicing results in multiple transcript variants. [provided by RefSeq, Oct 2009]

Product images:



Coomassie blue staining of purified RGMA protein (Cat# [TP321996]). The protein was produced from HEK293T cells transfected with RGMA cDNA clone (Cat# [RC221996]) using MegaTran 2.0 (Cat# [TT210002]).