

Product datasheet for TP321990

Integrin alpha 6 (ITGA6) (NM_000210) Human Recombinant Protein

Product data:

Product Type: Recombinant Proteins
Description: Recombinant protein of human integrin, alpha 6 (ITGA6), transcript variant 2, 20 µg
Species: Human
Expression Host: HEK293T
Expression cDNA Clone or AA Sequence: >RC221990 representing NM_000210
Red=Cloning site Green=Tags(s)

MAAAGQLCLLYLSAGLLSRLGAAFNLDTREDNVIRKYGDPSLFGFSLAMHWQLQPEDKRRLLLVGAPRAE
 ALPLQRANRTGGLYSCDITARGPCTRIEFDNDADPTSESKEDQWMGVTVQSQGPGGKVVTCACHRYEKRQ
 H
 VNTKQESRDIFGRCYVLSQNLRIEDDMDGGDWSFCDGRLRGHEKFGSCQQGVAATFTKDFHYIVFGAPGT
 YNWKGIVRVEQKNNTFFDMNIFEDGPYEVGGETEHDVSLVVPANSYLGFSLDGKIVSKDEITFVSGA
 PRANHSGAVVLLKRDMKSAHLLPEHIFDGEGLASSFGYDVAVVDLNKDGWQDIVIGAPQYFDRDGEVGG
 A
 VYVYMNQQGRWNNVKPIRLNGTKDSMFGIAVKNIGDINQDGYPDIAVGAPYDDLKGVFIYHGSANGINT
 K
 PTQVLKGISPYFGYSIAGNMDLDRNSYPDVAVGSLSDSVTIFRSRPVINIQTITVTPNRIDLKQKTACG
 APSGICLQVKSCFEYTANPAGYNPSISIVGTLEAEKERRKSGLSRVQFRNQGSEPKYTQELTLKRQKQK
 VCMEETLWLQDNIRDKLRPIPTASVEIQEPSSRRRVNSLPEVLPILNSDEPKTAHIDVHFLKEGCGDDN
 VCNSNLKLEYKFCTREGNQDKFSYLPQKGVPELVLDKQKDIALEITVNSPSNPRNPTKDGDAAHEAKL
 IATFPDLTYSAYRELRAFPEKQLSCVANQNGSQADCELGPNPFRNSNVTFYLVSTTEVTFDTPDLIN
 LKLETTSNQDNLAPITAKAKVVIELLSVSGVAKPSQVYFGGTVVGEQAMKSEDEVGSLIEYEFRVINLG
 KPLTNLGTATLNIQWPKEISNGKWLlyLVKVESKLEKVTCEPQKEINLNTESHNSRKKREITEKQID
 DNRKFSLFAERKYQTLNCSVNVNVCNIRCLRGLDSKASLILRSRLWNSTFLEEYSKLNLYLDILMRAFD
 VTAANENIRLPNAGTQVRVTVFPSKTVAQYSGVPWWIILVAILAGILMLALLVFILWKCGFFKRKNDHY
 DATYHKAIEHAQPSDKERLTSDA

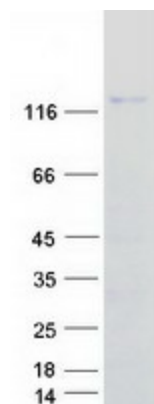
TRTRPLEQKLISEEDLAANDILDYKDDDDKV

Tag: C-Myc/DDK
Predicted MW: 117.2 kDa
Concentration: >0.05 µg/µL as determined by microplate BCA method



[View online »](#)

Purity:	> 80% as determined by SDS-PAGE and Coomassie blue staining
Buffer:	25 mM Tris-HCl, 100 mM glycine, pH 7.3, 10% glycerol
Preparation:	Recombinant protein was captured through anti-DDK affinity column followed by conventional chromatography steps.
Note:	For testing in cell culture applications, please filter before use. Note that you may experience some loss of protein during the filtration process.
Storage:	Store at -80°C.
Stability:	Stable for 12 months from the date of receipt of the product under proper storage and handling conditions. Avoid repeated freeze-thaw cycles.
RefSeq:	NP_000201
Locus ID:	3655
UniProt ID:	P23229
RefSeq Size:	5611
Cytogenetics:	2q31.1
RefSeq ORF:	3219
Synonyms:	CD49f; ITGA6B; VLA-6
Summary:	The gene encodes a member of the integrin alpha chain family of proteins. Integrins are heterodimeric integral membrane proteins composed of an alpha chain and a beta chain that function in cell surface adhesion and signaling. The encoded preproprotein is proteolytically processed to generate light and heavy chains that comprise the alpha 6 subunit. This subunit may associate with a beta 1 or beta 4 subunit to form an integrin that interacts with extracellular matrix proteins including members of the laminin family. The alpha 6 beta 4 integrin may promote tumorigenesis, while the alpha 6 beta 1 integrin may negatively regulate erbB2/HER2 signaling. Alternative splicing results in multiple transcript variants. [provided by RefSeq, Oct 2015]
Protein Families:	Druggable Genome, ES Cell Differentiation/IPS, Transmembrane
Protein Pathways:	Arrhythmogenic right ventricular cardiomyopathy (ARVC), Cell adhesion molecules (CAMs), Dilated cardiomyopathy, ECM-receptor interaction, Focal adhesion, Hematopoietic cell lineage, Hypertrophic cardiomyopathy (HCM), Pathways in cancer, Regulation of actin cytoskeleton, Small cell lung cancer

Product images:

Coomassie blue staining of purified ITGA6 protein (Cat# TP321990). The protein was produced from HEK293T cells transfected with ITGA6 cDNA clone (Cat# [RC221990]) using MegaTran 2.0 (Cat# [TT210002]).