

Product datasheet for TP321986M

TLR8 (NM_138636) Human Recombinant Protein

Product data:

Product Type:	Recombinant Proteins
Description:	Purified recombinant protein of Human toll-like receptor 8 (TLR8), with C-terminal MYC/DDK tag, expressed in HEK293 cells, 100 µg
Species:	Human
Expression Host:	HEK293
Expression cDNA Clone or AA Sequence:	>RC221986 representing NM_138636 Red=Cloning site Green=Tags(s)

MENMFLQSSMLTCIFLLISGSCELCAEENFSRSYPCDEKKQNDSVIAECSNRRRLQVEPQTVGKYVTELDLSDNFITHITNESFQGLQNLTKINLNHNPNVQHQNNGNPGIQSNGLNITDGAFLNLKNLRELLLEDNQLPQIPSGLPESLTELSQLIQQNNIYNITKEGISRLINLNKLYLAWNCYFNKVCEKTNIEDGVFETLTNLELLSLSFNSLSHVPPKLPSSLRKFLSNTQIKYISEEDFKGLINLTLDDLSGNCPRCFNAPFPCVPCDGGASINIDRFAFQNLTLRLYNLSSTSLRKINAAWFKNMPHLKVLDFEFNYLVGEIASGAFLTMLPRLEILDLSFNKYGSPYQHINISRNFSKLLSLRALHLRGYVFQELREDDFQPLMQLPNLSTINLGINFIKQIDFKLFQNFNSLEIYLSENRISPLVKDTRQSYANSSSFQRHIRKRRSTDFEFDPHSNFYHFTRPLIKPQCAAYGKALDLSLNSIFFIGPNQFENLPDIACLNLSANSNAQVLSGTEFSAIPHVKYLDLTDNNRLDFDNASALTELSDELVDLSYNSHYFRIAGVTHHLEFIQNFNLKVLNLSHNNIYTLTDKYNLESKSLVELVFSGNRLDILWNDDDNRYISIFKGLKNLTRLDSLNRKHIPNEAFLNLPASLTELHINDNMLKFFNWTLQFPRELLDLRGNKLLFLTDSLSDFTSSLRLLLLSHNRISHLPSGFLSEVSSLKHLDLSSNLLKTINKSALETKTTTKLSMLELHGNPFECTCDIGDFRRWMDHLNVKIPRLVDVICASPGDQQRGKSIVSLELTTCVSDVTAVILFFFTFFITTMVMLAALAHHLFYWDVWFIYVCLAKVKGYSLSSTQTFYDAYISYDTKDASVTDWVINELRYHLEESRDKNVLLCLEERDWDPLAIIIDNMQSINQSKKTVFVLTKKYAKSWNFKTA FYLALQRLMDENMDVIFILL
EPVLQHSQYLRLRQRICKSSILQWPDNPKAEGFLWQTLRNVVLTENDSRYNMNYVDSIKQY

TRTRPLEQKLISEEDLAANDILDYKDDDDKV

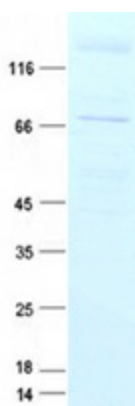
Tag:	C-Myc/DDK
Predicted MW:	119.6 kDa
Concentration:	>0.05 µg/µL as determined by microplate BCA method
Purity:	> 80% as determined by SDS-PAGE and Coomassie blue staining
Buffer:	25 mM Tris-HCl, 100 mM glycine, pH 7.3, 10% glycerol



[View online »](#)

Preparation:	Recombinant protein was captured through anti-DDK affinity column followed by conventional chromatography steps.
Note:	For testing in cell culture applications, please filter before use. Note that you may experience some loss of protein during the filtration process.
Storage:	Store at -80°C.
Stability:	Stable for 12 months from the date of receipt of the product under proper storage and handling conditions. Avoid repeated freeze-thaw cycles.
RefSeq:	NP_619542
Locus ID:	51311
UniProt ID:	Q9NR97
RefSeq Size:	4211
Cytogenetics:	Xp22.2
RefSeq ORF:	3123
Synonyms:	CD288
Summary:	The protein encoded by this gene is a member of the Toll-like receptor (TLR) family which plays a fundamental role in pathogen recognition and activation of innate immunity. TLRs are highly conserved from Drosophila to humans and share structural and functional similarities. They recognize pathogen-associated molecular patterns (PAMPs) that are expressed on infectious agents, and mediate the production of cytokines necessary for the development of effective immunity. The various TLRs exhibit different patterns of expression. This gene is predominantly expressed in lung and peripheral blood leukocytes, and lies in close proximity to another family member, TLR7, on chromosome X. [provided by RefSeq, Jul 2008]
Protein Families:	Druggable Genome, Transmembrane
Protein Pathways:	Toll-like receptor signaling pathway

Product images:



Coomassie blue staining of purified TLR8 protein (Cat# [TP321986]). The protein was produced from HEK293T cells transfected with TLR8 cDNA clone (Cat# [RC221986]) using MegaTran 2.0 (Cat# [TT210002]).