

## Product datasheet for **TP321983L**

### LUZP2 (NM\_001009909) Human Recombinant Protein

#### Product data:

**Product Type:** Recombinant Proteins

**Description:** Recombinant protein of human leucine zipper protein 2 (LUZP2), 1 mg

**Species:** Human

**Expression Host:** HEK293T

**Expression cDNA Clone  
or AA Sequence:** >RC221983 protein sequence  
**Red**=Cloning site **Green**=Tags(s)

MKFSPAHYLLPLLPALVLSTRQDYEELEKQLKEVFKERSTILRQLTKTSRELDGIKVNLQSLKNDEQSAK  
TDVQKLELGQKQREEMKSLQEALQNQLKETSEKAEKHQATINFLKTEVERKSKMIRDLQENENKSLKNKL  
LSGNKLCGIHAEESKKIQAQLKELRYGKKDLLFKAQQLTDLEQKLAVAKNELEKAALDRESQMKAMKETV  
QLCLTSVFRDQPPPPLSLITSNPTRMLPPRNIASKLPDAAAKSKPQQSASGNNESSQVESTKEGNPSTT  
ACDSQDEGRPCSMKHKESPPSNATAETETPIPQKLQMPPCSECEVKKAPEKPLTSFEGMAAREEKIL

**TRTRPLEQKLISEEDLAANDILDYKDDDDKV**

**Tag:** C-Myc/DDK

**Predicted MW:** 38.8 kDa

**Concentration:** >0.05 µg/µL as determined by microplate BCA method

**Purity:** > 80% as determined by SDS-PAGE and Coomassie blue staining

**Buffer:** 25 mM Tris-HCl, 100 mM glycine, pH 7.3, 10% glycerol

**Preparation:** Recombinant protein was captured through anti-DDK affinity column followed by conventional chromatography steps.

**Note:** For testing in cell culture applications, please filter before use. Note that you may experience some loss of protein during the filtration process.

**Storage:** Store at -80°C.

**Stability:** Stable for 12 months from the date of receipt of the product under proper storage and handling conditions. Avoid repeated freeze-thaw cycles.

**RefSeq:** [NP\\_001009909](#)

**Locus ID:** 338645

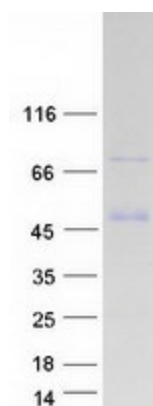


[View online »](#)

UniProt ID: [Q86TE4](#)  
RefSeq Size: 5311  
Cytogenetics: 11p14.3  
RefSeq ORF: 1038  
Synonyms: KFSP2566; PRO6246

**Summary:** This gene encodes a leucine zipper protein. This protein is deleted in some patients with Wilms tumor-Aniridia-Genitourinary anomalies-mental Retardation (WAGR) syndrome. Alternate splicing results in multiple transcript variants. [provided by RefSeq, Oct 2011]

### Product images:



Coomassie blue staining of purified LUZP2 protein (Cat# [TP321983]). The protein was produced from HEK293T cells transfected with LUZP2 cDNA clone (Cat# [RC221983]) using MegaTran 2.0 (Cat# [TT210002]).