

Product datasheet for **TP321983**

LUZP2 (NM_001009909) Human Recombinant Protein

Product data:

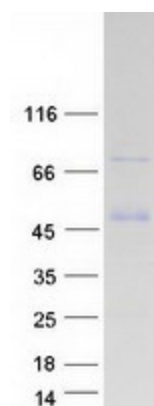
Product Type:	Recombinant Proteins
Description:	Recombinant protein of human leucine zipper protein 2 (LUZP2), 20 µg
Species:	Human
Expression Host:	HEK293T
Expression cDNA Clone or AA Sequence:	>RC221983 protein sequence Red =Cloning site Green =Tags(s)
	<p>MKFSPAHYLLPLLPALVLSTRQDYEELEKQLKEVFKERSTILRQLTKTSRELDGIKVNQLSKLNDEQSAK TDVQKLELGQKQREEMKSLQEALQNQLKETSEKAEKHQATINFLKTEVERKSKMIRDQLNENKSLKNKL LSGNKLCGIHAEESKKIQAQLKELRYGKKDLLFKAQQLTDLEQKLAVAKNELEKAALDRESQMKAMKETV QLCLTSVFRDQPPPPLSLITSNPTRMLLPPRNIASKLPDAAAKSKPQQSASGNNESSQVESTKEGNPSTT ACDSQDEGRPCSMKHKESPPSNATAETETPIQKLQMPPCSECEVKKAPEKPLTSFEGMAAREEKIL</p> <p>TRTRPLEQKLISEEDLAANDILDYKDDDDKV</p>
Tag:	C-Myc/DDK
Predicted MW:	38.8 kDa
Concentration:	>0.05 µg/µL as determined by microplate BCA method
Purity:	> 80% as determined by SDS-PAGE and Coomassie blue staining
Buffer:	25 mM Tris-HCl, 100 mM glycine, pH 7.3, 10% glycerol
Preparation:	Recombinant protein was captured through anti-DDK affinity column followed by conventional chromatography steps.
Note:	For testing in cell culture applications, please filter before use. Note that you may experience some loss of protein during the filtration process.
Storage:	Store at -80°C.
Stability:	Stable for 12 months from the date of receipt of the product under proper storage and handling conditions. Avoid repeated freeze-thaw cycles.
RefSeq:	<u>NP_001009909</u>
Locus ID:	338645



[View online »](#)

UniProt ID:	<u>Q86TE4</u>
RefSeq Size:	5311
Cytogenetics:	11p14.3
RefSeq ORF:	1038
Synonyms:	KFSP2566; PRO6246
Summary:	This gene encodes a leucine zipper protein. This protein is deleted in some patients with Wilms tumor-Aniridia-Genitourinary anomalies-mental Retardation (WAGR) syndrome. Alternate splicing results in multiple transcript variants. [provided by RefSeq, Oct 2011]

Product images:



Coomassie blue staining of purified LUZP2 protein (Cat# TP321983). The protein was produced from HEK293T cells transfected with LUZP2 cDNA clone (Cat# [RC221983]) using MegaTran 2.0 (Cat# [TT210002]).