

Product datasheet for **TP321965M**

beta Crystallin A3 (CRYBA1) (NM_005208) Human Recombinant Protein

Product data:

Product Type:	Recombinant Proteins
Description:	Recombinant protein of human crystallin, beta A1 (CRYBA1), 100 µg
Species:	Human
Expression Host:	HEK293T
Expression cDNA Clone or AA Sequence:	>RC221965 protein sequence Red =Cloning site Green =Tags(s)
	<p>METQAEQQELETLPPTTKMAQTNPTPGSLGPWKITIYDQENFQGKRMEFTSSCPNVSERSFDNVRSCLKVES GAWIGYEHTSFCGQQFILERGEYPRWDAWSGSNAYHIERLMSFRPICSANHKESKMTIFEKENFIGRQWE ISDDYPSLQAMGWFNNEVGSMKIQSGAWVCYQYPGYRGYQYILECDHHGGDYKHWREWGSHAQTSQIQSI RRIQQ</p> <p>TRTRPLEQKLISEEDLAANDILDYKDDDDKV</p>
Tag:	C-Myc/DDK
Predicted MW:	25 kDa
Concentration:	>0.05 µg/µL as determined by microplate BCA method
Purity:	> 80% as determined by SDS-PAGE and Coomassie blue staining
Buffer:	25 mM Tris-HCl, 100 mM glycine, pH 7.3, 10% glycerol
Preparation:	Recombinant protein was captured through anti-DDK affinity column followed by conventional chromatography steps.
Note:	For testing in cell culture applications, please filter before use. Note that you may experience some loss of protein during the filtration process.
Storage:	Store at -80°C.
Stability:	Stable for 12 months from the date of receipt of the product under proper storage and handling conditions. Avoid repeated freeze-thaw cycles.
RefSeq:	<u>NP_005199</u>
Locus ID:	1411
UniProt ID:	<u>P05813</u>



[View online »](#)

RefSeq Size: 806

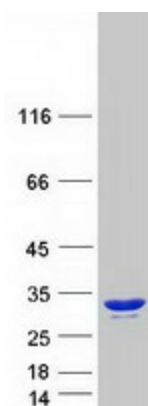
Cytogenetics: 17q11.2

RefSeq ORF: 645

Synonyms: CRYB1; CTRCT10

Summary: Crystallins are separated into two classes: taxon-specific, or enzyme, and ubiquitous. The latter class constitutes the major proteins of vertebrate eye lens and maintains the transparency and refractive index of the lens. Since lens central fiber cells lose their nuclei during development, these crystallins are made and then retained throughout life, making them extremely stable proteins. Mammalian lens crystallins are divided into alpha, beta, and gamma families; beta and gamma crystallins are also considered as a superfamily. Alpha and beta families are further divided into acidic and basic groups. Seven protein regions exist in crystallins: four homologous motifs, a connecting peptide, and N- and C-terminal extensions. Beta-crystallins, the most heterogeneous, differ by the presence of the C-terminal extension (present in the basic group, none in the acidic group). Beta-crystallins form aggregates of different sizes and are able to self-associate to form dimers or to form heterodimers with other beta-crystallins. This gene, a beta acidic group member, encodes two proteins (crystallin, beta A3 and crystallin, beta A1) from a single mRNA, the latter protein is 17 aa shorter than crystallin, beta A3 and is generated by use of an alternate translation initiation site. Deletion of exons 3 and 4 causes the autosomal dominant disease 'zonular cataract with sutural opacities'. [provided by RefSeq, Jul 2008]

Product images:



Coomassie blue staining of purified CRYBA1 protein (Cat# [TP321965]). The protein was produced from HEK293T cells transfected with CRYBA1 cDNA clone (Cat# [RC221965]) using MegaTran 2.0 (Cat# [TT210002]).