

## Product datasheet for TP321960M

### TMEM181 (NM\_020823) Human Recombinant Protein

#### Product data:

Product Type:	Recombinant Proteins
Description:	Recombinant protein of human transmembrane protein 181 (TMEM181), 100 µg
Species:	Human
Expression Host:	HEK293T
Expression cDNA Clone or AA Sequence:	>RC221960 representing NM_020823 Red=Cloning site Green=Tags(s)

MGAAPSPTQASSRGGGPGPPAPTRAVSSSSRARGGALSALGSPARPLTSPAPAPPPRSRPARQQPDPQ  
CWEKRGGAGGDTKGGAGPGPGRLRGMDAEYPAFEPPLCSELKHLCRRLREAYRELKEDLTPFKDDRYR  
LAPMRLYLSKRHFVLVFFVFFICFGLTIFVGIRGPKVIQTSANFSLNNSKKLKPIQILSNPLSTYNQQ  
LWLTCVELDQSKETSIKTSFPMTVKVDGVAQDGTMYIHNKVHNRTRTLTCAGKCAEIIVAHLGYLNYT  
QYTVIVGFHEHLKLPKGMNFTWKTYNPAFSRLEIWFRRFFVLTFTVTCFAHSLRKFMSMRDWGIEQKWM  
SVLLPLLLLYNDPFFPLSFLVNSWLPGMDDLFQSMFLCALLLFWLCVYHGIRVQGERKCLTFYLPKFFI  
VGLLWLASVTLGIWQTVNELHDPYQYRVDGTGNFQGMKVFFMVAAVYILYLLFLIVRACSELRHMPYVD  
LRLKFLTALTFVVLVISIAILYLRFGAQLQDNFVAELSTHYQNSAEFLSFYGLLNFYLYTLAFVYSPSK  
NALYESQLKDNPAFMSMLNDSDDDIYGS DYEEMLQNGQAIRAKYKEESDSD

TRTRPLEQKLISEEDLAANDILDYKDDDDKV

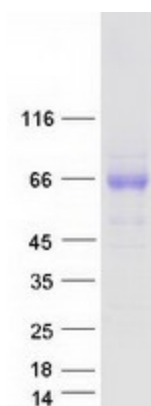
Tag:	C-Myc/DDK
Predicted MW:	69.1 kDa
Concentration:	>0.05 µg/µL as determined by microplate BCA method
Purity:	> 80% as determined by SDS-PAGE and Coomassie blue staining
Buffer:	25 mM Tris-HCl, 100 mM glycine, pH 7.3, 10% glycerol
Preparation:	Recombinant protein was captured through anti-DDK affinity column followed by conventional chromatography steps.
Note:	For testing in cell culture applications, please filter before use. Note that you may experience some loss of protein during the filtration process.
Storage:	Store at -80°C.



[View online »](#)

<b>Stability:</b>	Stable for 12 months from the date of receipt of the product under proper storage and handling conditions. Avoid repeated freeze-thaw cycles.
<b>RefSeq:</b>	<a href="#">NP_065874</a>
<b>Locus ID:</b>	57583
<b>UniProt ID:</b>	<a href="#">Q9P2C4</a>
<b>RefSeq Size:</b>	5397
<b>Cytogenetics:</b>	6q25.3
<b>RefSeq ORF:</b>	1836
<b>Synonyms:</b>	GPR178; KIAA1423
<b>Summary:</b>	The TMEM181 gene encodes a putative G protein-coupled receptor expressed on the cell surface (Carette et al., 2009 [PubMed 19965467]; Wollscheid et al., 2009 [PubMed 19349973]). [supplied by OMIM, Jan 2010]
<b>Protein Families:</b>	Transmembrane

### Product images:



Coomassie blue staining of purified TMEM181 protein (Cat# [TP321960]). The protein was produced from HEK293T cells transfected with TMEM181 cDNA clone (Cat# [RC221960]) using MegaTran 2.0 (Cat# [TT210002]).