

Product datasheet for **TP321955**

OVCA1 (DPH1) (NM_001383) Human Recombinant Protein

Product data:

Product Type: Recombinant Proteins

Description: Recombinant protein of human DPH1 homolog (*S. cerevisiae*) (DPH1), 20 µg

Species: Human

Expression Host: HEK293T

Expression cDNA Clone >RC221955 representing NM_001383

or AA Sequence: **Red**=Cloning site **Green**=Tags(s)

MRRQVMAALVSGAAEQGGRDGPGRGRAPRGRVANQIPPEILKNPQLQAAIRVLP SNYNFEIPKTIWRIQ
QAQAKKVALQMPEGLLLFACTIVDILERFTEAEVMVMGDVTYGACCVDDFTARALGADFLVHYGHSC
LIP
MDTSAQDFRVLVYFVDIRIDTTHLLDSLRLTFPPATALALVSTIQFVSTLQAAAQELKAEYRVSVPQCKP
LSPGEILGCTSPRLSKEVEAVVYLGDRGFHLESVMIANPNVPAYRYDPYKVLRSREHYDHRMQAARQEA
IATARSASWGLILGTLGRQGSPKILEHLESRLRALGLSFVRLLLSEIFPSKLSLLPEVDVWVQVACPR
L
SIDWGTAFPKPLLPYEAAVALRDISWQQPYPMDFYAGSSLGPWTVNHGQDRRPHAPGRPAR
GKVQEGSARPPSAVACEDCSCRDEKVAPLAP

TRTRPLEQKLISEEDLAANDILDYKDDDDKV

Tag: C-Myc/DDK

Predicted MW: 48.6 kDa

Concentration: >0.05 µg/µL as determined by microplate BCA method

Purity: > 80% as determined by SDS-PAGE and Coomassie blue staining

Buffer: 25 mM Tris-HCl, 100 mM glycine, pH 7.3, 10% glycerol

Preparation: Recombinant protein was captured through anti-DDK affinity column followed by conventional chromatography steps.

Note: For testing in cell culture applications, please filter before use. Note that you may experience some loss of protein during the filtration process.

Storage: Store at -80°C.

Stability: Stable for 12 months from the date of receipt of the product under proper storage and handling conditions. Avoid repeated freeze-thaw cycles.

RefSeq: [NP_001374](#)



[View online »](#)

Locus ID: 1801

UniProt ID: [Q9BZG8](#)

RefSeq Size: 2200

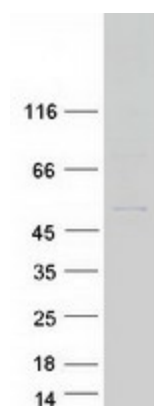
Cytogenetics: 17p13.3

RefSeq ORF: 1329

Synonyms: DEDSSH; DPH2L; DPH2L1; OVCA1

Summary: The protein encoded by this gene is an enzyme involved in the biosynthesis of diphthamide, a modified histidine found only in elongation factor-2 (EEF2). Diphthamide residues in EEF2 are targeted for ADP-ribosylation by diphtheria toxin and Pseudomonas exotoxin A. Defects in this gene have been associated with both ovarian cancer and autosomal recessive intellectual disability with short stature, craniofacial, and ectodermal anomalies. [provided by RefSeq, Oct 2016]

Product images:



Coomassie blue staining of purified DPH1 protein (Cat# TP321955). The protein was produced from HEK293T cells transfected with DPH1 cDNA clone (Cat# [RC221955]) using MegaTran 2.0 (Cat# [TT210002]).