

Product datasheet for TP321919M

SLC12A3 (NM_000339) Human Recombinant Protein

Product data:

Product Type:	Recombinant Proteins
Description:	Purified recombinant protein of Homo sapiens solute carrier family 12 (sodium/chloride transporters), member 3 (SLC12A3), transcript variant 1, 100 µg
Species:	Human
Expression Host:	HEK293T
Expression cDNA Clone or AA Sequence:	>RC221919 representing NM_000339 Red =Cloning site Green =Tags(s)

MAELPTTETPGDATLCSGRFTISTLLSSDESPPAAYDSSHPSHLTHSSTFCMRTFGYNTIDWVPTYEHY
ANSTQPGEPKVRPTLADLHSLKQEGRHLHALAFDSRPSHEMTDGLVEGEAGTSSEKNPEEPVRFGWVK
GVMIRCMLNIWGVILYLRPLWITAQAGIVLWIIILLSVTVTSITGLSISAISTNGKVKSGGTYFLISRS
LGPELGGSIGLIFAFANAVGVAMHTVGFVETVDRLLQEYGAPIVDPINDIRIIGVSVTVLLAISLAGME
WESKAQVLFLLVIMVSFANYLVGTLIPPEDEKASKGFFSYRADIFVQNLVPDWRGPDGTFFGMFSIFFPS
ATGILAGANISGDLKDPAAIAPKGTLMIAFWTTISYLAISATIGSCVVRDASGVLNDTVTPGWGACEGLA
CSYGWNFTECTQQHSHCHYGLINYYQTMSMVS GFAPLITAGIFGATLSSALACLVSAAKVFCCLCEDQLYP
LIGFFGKGYGKNKEPVRYLLAYIAVAFIIAELNTIAPIISNFFLCSYALINFSCFHASITNSPGWRP
SFQYYNKWAALFGAII SVIMFLLTWWAALIAIGVLLFLLLYVIYKKPEVNWGSSVQAGSYNLALSYSVG
LNEVEDHIKNYRPQCLVLTGPPNFRPALVDFVGTFRNLSLMICGHVLI GPHKQRMPELQLIANGHTKWL
NKRKIKAFYSDVIAEDLRRGVQILMQAAGLGRMKPNILVVGFKKNWQSAHPATVEDYIGILHDAFDNYG
VCVMRMREGLNVSKMMQAHINPVFDP AEDGKEASARGARPSVSGALDPKALVKEEQATTIFQSEQGKKT
DIYWLFDDGGLTLLIPYLLGRKRRWSKCKIRVFGGQINRMDQERKAIISLLSKFRLGFHEVHILPDINQ
NPRAEHTKRFEDMIAPFRLNDGFKDEATVNEMRRDCPWKISDEEITKNRVKSLRQVRLNEIVLDYSRDA
LIVITLPIGRKKGCPSSLYMAWLETLSQDLRPPVILIRGNQENVLTFYCQ

TRTRPLEQKLISEEDLAANDILDYKDDDDKV

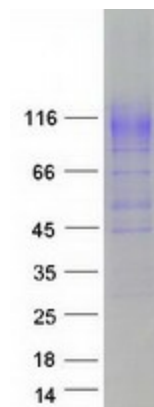
Tag:	C-Myc/DDK
Predicted MW:	113.7 kDa
Concentration:	>0.05 µg/µL as determined by microplate BCA method
Purity:	> 80% as determined by SDS-PAGE and Coomassie blue staining
Buffer:	25 mM Tris-HCl, 100 mM glycine, pH 7.3, 10% glycerol



[View online »](#)

Preparation:	Recombinant protein was captured through anti-DDK affinity column followed by conventional chromatography steps.
Note:	For testing in cell culture applications, please filter before use. Note that you may experience some loss of protein during the filtration process.
Storage:	Store at -80°C.
Stability:	Stable for 12 months from the date of receipt of the product under proper storage and handling conditions. Avoid repeated freeze-thaw cycles.
RefSeq:	NP_000330
Locus ID:	6559
UniProt ID:	P55017
RefSeq Size:	3131
Cytogenetics:	16q13
RefSeq ORF:	3090
Synonyms:	NCC; NCCT; TSC
Summary:	This gene encodes a renal thiazide-sensitive sodium-chloride cotransporter that is important for electrolyte homeostasis. This cotransporter mediates sodium and chloride reabsorption in the distal convoluted tubule. Mutations in this gene cause Gitelman syndrome, a disease similar to Bartter's syndrome, that is characterized by hypokalemic alkalosis combined with hypomagnesemia, low urinary calcium, and increased renin activity associated with normal blood pressure. This cotransporter is the target for thiazide diuretics that are used for treating high blood pressure. Multiple transcript variants encoding different isoforms have been found for this gene. [provided by RefSeq, Jul 2008]
Protein Families:	Druggable Genome, Transmembrane

Product images:



Coomassie blue staining of purified SLC12A3 protein (Cat# [TP321919]). The protein was produced from HEK293T cells transfected with SLC12A3 cDNA clone (Cat# [RC221919]) using MegaTran 2.0 (Cat# [TT210002]).