

## Product datasheet for TP321919

### SLC12A3 (NM\_000339) Human Recombinant Protein

#### Product data:

Product Type:	Recombinant Proteins
Description:	Purified recombinant protein of Homo sapiens solute carrier family 12 (sodium/chloride transporters), member 3 (SLC12A3), transcript variant 1, 20 µg
Species:	Human
Expression Host:	HEK293T
Expression cDNA Clone or AA Sequence:	>RC221919 representing NM_000339 <b>Red</b> =Cloning site <b>Green</b> =Tags(s)

MAELPTTETPGDATLCSGRFTISTLLSSDESPPAAYDSSHPSHLTHSSTFCMRTFGYNTIDWVPTYEHY  
ANSTQPGEPKVRPTLADLHSLKQEGRHLHALAFDSRPSHEMTDGLVEGEAGTSSEKNPEEPVRFGWVK  
GVMIRCMLNIWGVILYLRPLWITAQAGIVLWIIILLSVTVTSITGLSISAISTNGKVKSGGTYFLISRS  
LGPELGGSIGLIFAFANAVGVAMHTVGFVETVDRLLQEYGAPIVDPINDIRIIGVSVTVLLAISLAGME  
WESKAQVLFLLVIMVSFANYLVGTLIPSEDKASKGFFSYRADIFVQNLVPDWRGPDGTFFGMFSIFFPS  
ATGILAGANISGDLKDPAAIAPKGTLMMAIFWTTISYLAISATIGSCVVRDASGVLNDTVTPGWGACEGLA  
CSYGWNFTECTQQHSHCHYGLINYYQTMSMVS GFAPLITAGIFGATLSSALACLVSAAKVFCCLCEDQLYP  
LIGFFGKGYGKNKEPVRYLLAYIAVAFIIAELNTIAPIISNFFLCSYALINFSCFHASITNSPGWRP  
SFQYYNKWAALFGAII SVIMFLLTWWAALIAIGVLLFLLLYVIYKKPEVNWGSSVQAGSYNLALSYSVG  
LNEVEDHIKNYRPQCLVLTGPPNFRPALVDFVGTFRNLSLMICGHVLIGPHKQRMPELQLIANGHTKWL  
NKRKIKAFYSDVIAEDLRRGVQILMQAAGLGRMKPNILVVGFKKNWQSAHPATVEDYIGILHDAFDNYG  
VCVMRMREGLNVSKMMQAHINPVFDPVPAEDGKEASARGARPSVSGALDPKALVKEEQATTIFQSEQGKKT  
DIYWLFDDGGLTLLIPYLLGRKRRWSKCKIRVFGGQINRMDQERKAIISLLSKFRLGFHEVHILPDINQ  
NPRAEHTKRFEDMIAPFRLNDGFKDEATVNEMRRDCPWKISDEEITKNRVKSLRQVRLNEIVLDYSRDA  
LIVITLPIGRKGCPSLYMAWLETLSQDLRPPVILIRGNQENVLTFYCQ

**TRTRPLEQKLISEEDLAANDILDYKDDDDKV**

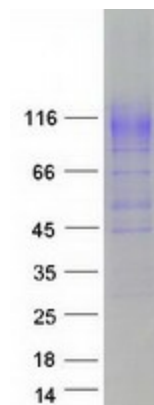
Tag:	C-Myc/DDK
Predicted MW:	113.7 kDa
Concentration:	>0.05 µg/µL as determined by microplate BCA method
Purity:	> 80% as determined by SDS-PAGE and Coomassie blue staining
Buffer:	25 mM Tris-HCl, 100 mM glycine, pH 7.3, 10% glycerol



[View online »](#)

<b>Preparation:</b>	Recombinant protein was captured through anti-DDK affinity column followed by conventional chromatography steps.
<b>Note:</b>	For testing in cell culture applications, please filter before use. Note that you may experience some loss of protein during the filtration process.
<b>Storage:</b>	Store at -80°C.
<b>Stability:</b>	Stable for 12 months from the date of receipt of the product under proper storage and handling conditions. Avoid repeated freeze-thaw cycles.
<b>RefSeq:</b>	<a href="#">NP_000330</a>
<b>Locus ID:</b>	6559
<b>UniProt ID:</b>	<a href="#">P55017</a>
<b>RefSeq Size:</b>	3131
<b>Cytogenetics:</b>	16q13
<b>RefSeq ORF:</b>	3090
<b>Synonyms:</b>	NCC; NCCT; TSC
<b>Summary:</b>	This gene encodes a renal thiazide-sensitive sodium-chloride cotransporter that is important for electrolyte homeostasis. This cotransporter mediates sodium and chloride reabsorption in the distal convoluted tubule. Mutations in this gene cause Gitelman syndrome, a disease similar to Bartter's syndrome, that is characterized by hypokalemic alkalosis combined with hypomagnesemia, low urinary calcium, and increased renin activity associated with normal blood pressure. This cotransporter is the target for thiazide diuretics that are used for treating high blood pressure. Multiple transcript variants encoding different isoforms have been found for this gene. [provided by RefSeq, Jul 2008]
<b>Protein Families:</b>	Druggable Genome, Transmembrane

### Product images:



Coomassie blue staining of purified SLC12A3 protein (Cat# TP321919). The protein was produced from HEK293T cells transfected with SLC12A3 cDNA clone (Cat# [RC221919]) using MegaTran 2.0 (Cat# [TT210002]).