

Product datasheet for **TP321910M**

TCF23 (NM_175769) Human Recombinant Protein

Product data:

Product Type:	Recombinant Proteins
Description:	Recombinant protein of human transcription factor 23 (TCF23), 100 µg
Species:	Human
Expression Host:	HEK293T
Expression cDNA Clone or AA Sequence:	>RC221910 representing NM_175769 Red =Cloning site Green =Tags(s) MSQRKARGPPAMPVGVGHSQTQAKARLLPGADRKRSRLSRTRQDPWEERSWSNQRWSRATPGPRGTRAGGL ALGRSEASPENAAERERSRVRTLRLQAFALQAALPAVPPDTKLSKLDVLAASYIAHLRTRTLGHELPGPA WPPFLRGLRYLHPLKKWPMRSRLYAGGLGYSDLDSTTASTPSQRTRDAEVGSQVPGEADALLSTPLSPA LGDK TRTRPLEQKLISEEDLAANDILDYKDDDDKV
Tag:	C-Myc/DDK
Predicted MW:	23.1 kDa
Concentration:	>0.05 µg/µL as determined by microplate BCA method
Purity:	> 80% as determined by SDS-PAGE and Coomassie blue staining
Buffer:	25 mM Tris-HCl, 100 mM glycine, pH 7.3, 10% glycerol
Preparation:	Recombinant protein was captured through anti-DDK affinity column followed by conventional chromatography steps.
Note:	For testing in cell culture applications, please filter before use. Note that you may experience some loss of protein during the filtration process.
Storage:	Store at -80°C.
Stability:	Stable for 12 months from the date of receipt of the product under proper storage and handling conditions. Avoid repeated freeze-thaw cycles.
RefSeq:	NP_786951
Locus ID:	150921
UniProt ID:	Q7RTU1



[View online »](#)

RefSeq Size: 645

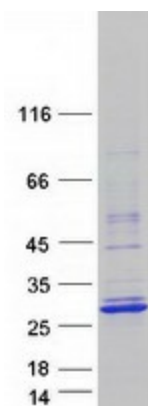
Cytogenetics: 2p23.3

RefSeq ORF: 642

Synonyms: bHLHa24; OUT; TCF-23

Summary: The gene encodes a member of the basic helix-loop-helix transcription factor family. Studies of the orthologous gene in mouse have shown the encoded protein does not bind DNA but may negatively regulate other basic helix-loop-helix factors via the formation of a functionally inactive heterodimeric complex. [provided by RefSeq, May 2010]

Product images:



Coomassie blue staining of purified TCF23 protein (Cat# [TP321910]). The protein was produced from HEK293T cells transfected with TCF23 cDNA clone (Cat# [RC221910]) using MegaTran 2.0 (Cat# [TT210002]).