

## Product datasheet for **TP321902M**

### **LIN7 (LIN7A) (NM\_004664) Human Recombinant Protein**

#### Product data:

Product Type:	Recombinant Proteins
Description:	Recombinant protein of human lin-7 homolog A (C. elegans) (LIN7A), 100 µg
Species:	Human
Expression Host:	HEK293T
Expression cDNA Clone or AA Sequence:	>RC221902 protein sequence <b>Red</b> =Cloning site <b>Green</b> =Tags(s)
	 MLKPSVTSAPTADMATLTVQPLTLDRDVARAIELLEKLQESGEVPVHKLQSLKKVLQSEFCTAIREVYQ YMHETITVNGCPEFRARATAKATVAFAASEGHSHPRWELPKTDEGLGFNVMMGGKEQNSPIYISRIIPG GVAERHGGLKRGDQLLSVNGVSVVEGEHHEKAVELLKAAKDSVKLWVRYTPKVLEEMEARFEKLRARRRQ QQQLLIQQQQQQQQQTQQNHMS  <b>TRTRPLEQKLISEEDLAANDILDYKDDDDKV</b>
Tag:	C-Myc/DDK
Predicted MW:	25.8 kDa
Concentration:	>0.05 µg/µL as determined by microplate BCA method
Purity:	> 80% as determined by SDS-PAGE and Coomassie blue staining
Buffer:	25 mM Tris-HCl, 100 mM glycine, pH 7.3, 10% glycerol
Preparation:	Recombinant protein was captured through anti-DDK affinity column followed by conventional chromatography steps.
Note:	For testing in cell culture applications, please filter before use. Note that you may experience some loss of protein during the filtration process.
Storage:	Store at -80°C.
Stability:	Stable for 12 months from the date of receipt of the product under proper storage and handling conditions. Avoid repeated freeze-thaw cycles.
RefSeq:	<u><a href="#">NP_004655</a></u>
Locus ID:	8825
UniProt ID:	<u><a href="#">O14910</a></u>



[View online »](#)

RefSeq Size: 1235

Cytogenetics: 12q21.31

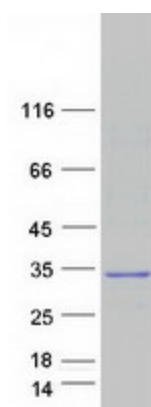
RefSeq ORF: 699

Synonyms: LIN-7A; LIN7; MALS-1; MALS1; TIP-33; VELI1

**Summary:** The protein encoded by this gene is involved in generating and maintaining the asymmetric distribution of channels and receptors at the cell membrane. The encoded protein also is required for the localization of some specific channels and can be part of a protein complex that couples synaptic vesicle exocytosis to cell adhesion in the brain. [provided by RefSeq, May 2016]

**Protein Families:** Druggable Genome

### Product images:



Coomassie blue staining of purified LIN7A protein (Cat# [TP321902]). The protein was produced from HEK293T cells transfected with LIN7A cDNA clone (Cat# [RC221902]) using MegaTran 2.0 (Cat# [TT210002]).