

Product datasheet for TP321895M

PCB (PC) (NM_000920) Human Recombinant Protein

Product data:

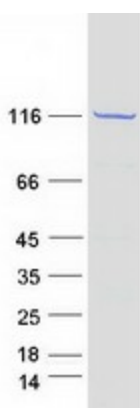
Product Type:	Recombinant Proteins
Description:	Recombinant protein of human pyruvate carboxylase (PC), nuclear gene encoding mitochondrial protein, transcript variant 1, 100 µg
Species:	Human
Expression Host:	HEK293T
Expression cDNA Clone or AA Sequence:	>RC221895 representing NM_000920 Red =Cloning site Green =Tags(s)
	<p>MLKFRTVHGGLRLLGIRRTSTAPAASPNVRRLEYKPIKVMVANRGEIAIRVFRACTELGIRTVAIYSEQ DTGQMHRQKADEAYLIGRGLAPVQAYLHIPDIIKVAKENNVDAVHPGYGFLSERADFAQACQDAGVRFIG PSPEVVRKMGDKVEARAIAAAGVPVPGTDAPITSLHEAHEFSNTYGFPIIFKAAYGGGGRGMRVVHSY EELEENYTRAYSEALAAFNGALFVEKFIKPRHIEVQILGDQYGNILHLYERDCSIQRRHQKVEIAPA AHLDPQLRTRLTSDSVKLAKQVGYENAGTVEFLVDRHGKHYFIEVNSRLQVEHTVTEEITDVDLVHAQIH VAEGRSLPDLGLRQENIRINGCAIQCRVTTEDPARSFQPDGTGRIEVRFRSGEGMGIRLDNASAFQGAVIS HYDSSLVKVIAHGKDHPTAATKMSRALAEFRVRGVKTNIAFLQNVLNNQQFLAGVTDTQFIDENPELFQL RPAQNRAQKLLHYLGHVMVNGPTTPIPVKASPSPTDPVPAVPIGPPPAGFRDILLREGPEGFARAVRNH PGLLLMDTTFRDAHQSLLATRVTRHDLKKIAPYVAHNFSKLFSMENWGGATFDVAMRFLYECPWRRQLQEL RELIPNIPFQMLLRGANAVGYTNYPDNVVFKEVAKENGMDVFRVFDLSNLYLPNMLLGMEAAGSAGGVV EAAISYTGDVADPSRTKYSLQYYMGLAEELVRAGTHILCIKDMAGLLKPTACTMLVSSLRDRFPDPLPHI HTHDTSGAGVAAMLACAQAGADVVDVAADSMSGMTSQPSMGALVACTRGTPLDTEVPMERVFYSEYWEG ARGLYAAFDCATMKSGNSDVYENEIPGGQYTNLHFQAHSMGLGSKFKEVKKAYVEANQMLGDLIKVTPS SKIVGDLAQFMVQNGLSRAEAEAQAELSFPRSVVEFLQGYIGVPHGGFPEPFRSKVLKDLPRVEGRPGA SLPPLDLQALEKELVDRHGEEVTPEDVLSAAMYDPVFAHFKDFTATFGPLDSLNTLRFQGPKIAEEFEV ELERKTLHIKALAVSDLNRAGQRQVFFELNGQLRSILVKDTQAMKEMHFHPKALKDVKQGIGAPMPGKV IDIKVVAGAKVAKGQPLCVLSAMKMETVVTSPMEGTVRKVHVTKDMTLEGDDLILEIE</p> <p>TRTRPLEQKLISEEDLAANDILDYKDDDDKV</p>
Tag:	C-Myc/DDK
Predicted MW:	127.4 kDa
Concentration:	>0.05 µg/µL as determined by microplate BCA method
Purity:	> 80% as determined by SDS-PAGE and Coomassie blue staining



[View online »](#)

Buffer:	25 mM Tris-HCl, 100 mM glycine, pH 7.3, 10% glycerol
Preparation:	Recombinant protein was captured through anti-DDK affinity column followed by conventional chromatography steps.
Note:	For testing in cell culture applications, please filter before use. Note that you may experience some loss of protein during the filtration process.
Storage:	Store at -80°C.
Stability:	Stable for 12 months from the date of receipt of the product under proper storage and handling conditions. Avoid repeated freeze-thaw cycles.
RefSeq:	NP_000911
Locus ID:	5091
UniProt ID:	P11498 , A0A024R5C5
RefSeq Size:	4111
Cytogenetics:	11q13.2
RefSeq ORF:	3534
Synonyms:	PCB
Summary:	This gene encodes pyruvate carboxylase, which requires biotin and ATP to catalyse the carboxylation of pyruvate to oxaloacetate. The active enzyme is a homotetramer arranged in a tetrahedron which is located exclusively in the mitochondrial matrix. Pyruvate carboxylase is involved in gluconeogenesis, lipogenesis, insulin secretion and synthesis of the neurotransmitter glutamate. Mutations in this gene have been associated with pyruvate carboxylase deficiency. Alternatively spliced transcript variants with different 5' UTRs, but encoding the same protein, have been found for this gene. [provided by RefSeq, Jul 2008]
Protein Families:	Druggable Genome
Protein Pathways:	Citrate cycle (TCA cycle), Metabolic pathways, Pyruvate metabolism

Product images:



Coomassie blue staining of purified PC protein (Cat# [TP321895]). The protein was produced from HEK293T cells transfected with PC cDNA clone (Cat# [RC221895]) using MegaTran 2.0 (Cat# [TT210002]).