

Product datasheet for **TP321884**

CK1 epsilon (CSNK1E) (NM_001894) Human Recombinant Protein

Product data:

Product Type: Recombinant Proteins
Description: Recombinant protein of human casein kinase 1, epsilon (CSNK1E), transcript variant 2, 20 µg
Species: Human
Expression Host: HEK293T
Expression cDNA Clone or AA Sequence: >RC221884 protein sequence
Red=Cloning site **Green**=Tags(s)

MELRVGNKYRLGRKIGSGSFGDIYLGANIASGEEVAIKLECVKTKHPQLHIESKFYKMMQGGVGIPSIKW
CGAEGDYNVMVMELLGPSLEDLFNFCSRKFSLKTVLLLADQMISRIEYIHSKNFIHRDVKPDNFLMGLGK
KGNLVYIIDFGLAKKYRDARTHQHIPPYRENKNLTGTARYASINTHLGIEQSRDDLES LGVYLMYFNLGS
LPWQGLKAATKRQKYERISEKKMSTPIEVLCKGYPSEFSTYLNFCRSLRFDDKPDYSYLRQLFRNLFHRQ
GFSYDYVFDWNMLKFGAARNPEDVDRERREHEREERMGQLRGSATRALPPGPPTGATANRLRSAAEPVA
S
TPASRIQPAGNTSPRAISRVDREKRVSMRLHRGAPANVSSDLTGRQEVSRIPASQTSVPFDHLGK

TRTRPLEQKLISEEDLAANDILDYKDDDDKV

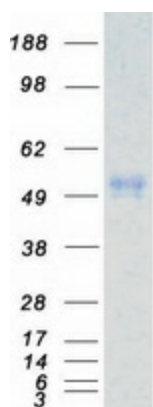
Tag: C-Myc/DDK
Predicted MW: 47.1 kDa
Concentration: >0.05 µg/µL as determined by microplate BCA method
Purity: > 80% as determined by SDS-PAGE and Coomassie blue staining
Buffer: 25 mM Tris-HCl, 100 mM glycine, pH 7.3, 10% glycerol
Preparation: Recombinant protein was captured through anti-DDK affinity column followed by conventional chromatography steps.
Note: For testing in cell culture applications, please filter before use. Note that you may experience some loss of protein during the filtration process.
Storage: Store at -80°C.
Stability: Stable for 12 months from the date of receipt of the product under proper storage and handling conditions. Avoid repeated freeze-thaw cycles.
RefSeq: [NP_001885](#)



[View online »](#)

Locus ID:	1454
UniProt ID:	P49674
RefSeq Size:	2670
Cytogenetics:	22q13.1
RefSeq ORF:	1248
Synonyms:	CKIε; CKIepsilon; HCKIE
Summary:	<p>The protein encoded by this gene is a serine/threonine protein kinase and a member of the casein kinase I protein family, whose members have been implicated in the control of cytoplasmic and nuclear processes, including DNA replication and repair. The encoded protein is found in the cytoplasm as a monomer and can phosphorylate a variety of proteins, including itself. This protein has been shown to phosphorylate period, a circadian rhythm protein. Two transcript variants encoding the same protein have been found for this gene. [provided by RefSeq, Feb 2014]</p>
Protein Families:	Druggable Genome, Protein Kinase
Protein Pathways:	Circadian rhythm - mammal, Hedgehog signaling pathway, Wnt signaling pathway

Product images:



Coomassie blue staining of purified CSNK1E protein (Cat# TP321884). The protein was produced from HEK293T cells transfected with CSNK1E cDNA clone (Cat# [RC221884]) using MegaTran 2.0 (Cat# [TT210002]).