

Product datasheet for **TP321878L**

FCRL2 (NM_030764) Human Recombinant Protein

Product data:

| | |
|---------------------------------------|---|
| Product Type: | Recombinant Proteins |
| Description: | Recombinant protein of human Fc receptor-like 2 (FCRL2), transcript variant 2, 1 mg |
| Species: | Human |
| Expression Host: | HEK293T |
| Expression cDNA Clone or AA Sequence: | >RC221878 representing NM_030764 Red =Cloning site Green =Tags(s) |

MLLWSELLVIFDAVTEQADSLTLVAPSSVFEGDSIVLKCQGEQNWKIQKMAYHKDNKELSVFKKFSDFLIQ
SAVLSDSGNYFCSTKQQLFLWDKTSNIVKIKVQELFQRPVLTASSFQPIEGGPVSLKCETRLSPQRDLVQ
LQFCFFRENQVLGSGWSSPELQISAVWSEDTGSYWCKAETVTHRIRKQSLQSQIHVQRIPISNVLSLEIR
APGGQVTEGQKLILLCSVAGGTGNVTFWSYREATGTSMGKKTQRSLSAELEIPAVKESDAGKYCRADNG
HVPIQSKVWNIPVRIPVSRPVLTLRSPGAQAAVGDILLEHCEALRGSPPILYQFYHEDVTLGNSSAPSGG
GASFNLSLTAEHSGNYSCEANGLGAQCSEAVPVSISGPDGYRRDLMTAGVLWGLFGVLGFTGVALLLYA
LFHKISGESSATNEPRGASRPNPQEFTYSSPTPDMEELQPVVVNVGSDVDVWYSQVWSMQQPESANIR
TLENKDSQVIYSSVKKS

TRTRPLEQKLISEEDLAANDILDYKDDDDKV

| | |
|----------------|--|
| Tag: | C-Myc/DDK |
| Predicted MW: | 53.4 kDa |
| Concentration: | >0.05 µg/µL as determined by microplate BCA method |
| Purity: | > 80% as determined by SDS-PAGE and Coomassie blue staining |
| Buffer: | 25 mM Tris-HCl, 100 mM glycine, pH 7.3, 10% glycerol |
| Preparation: | Recombinant protein was captured through anti-DDK affinity column followed by conventional chromatography steps. |
| Note: | For testing in cell culture applications, please filter before use. Note that you may experience some loss of protein during the filtration process. |
| Storage: | Store at -80°C. |
| Stability: | Stable for 12 months from the date of receipt of the product under proper storage and handling conditions. Avoid repeated freeze-thaw cycles. |



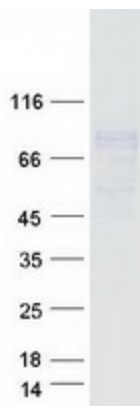
[View online »](#)

| | |
|---------------|--|
| RefSeq: | NP_110391 |
| Locus ID: | 79368 |
| UniProt ID: | Q96LA5 , B4E0W2 |
| RefSeq Size: | 2573 |
| Cytogenetics: | 1q23.1 |
| RefSeq ORF: | 1524 |
| Synonyms: | CD307b; FCRH2; IFGP4; IRTA4; SPAP1; SPAP1A; SPAP1B; SPAP1C |

Summary: This gene encodes a member of the immunoglobulin receptor superfamily and is one of several Fc receptor-like glycoproteins clustered on the long arm of chromosome 1. The encoded protein has four extracellular C2-type immunoglobulin domains, a transmembrane domain and a cytoplasmic domain that contains one immunoreceptor-tyrosine activation motif and two immunoreceptor-tyrosine inhibitory motifs. This protein may be a prognostic marker for chronic lymphocytic leukemia. Alternatively spliced transcript variants have been described, but their biological validity has not been determined. [provided by RefSeq, Apr 2009]

Protein Families: Druggable Genome, Transmembrane

Product images:



Coomassie blue staining of purified FCRL2 protein (Cat# [TP321878]). The protein was produced from HEK293T cells transfected with FCRL2 cDNA clone (Cat# [RC221878]) using MegaTran 2.0 (Cat# [TT210002]).