

Product datasheet for **TP321878**

FCRL2 (NM_030764) Human Recombinant Protein

Product data:

Product Type:	Recombinant Proteins
Description:	Recombinant protein of human Fc receptor-like 2 (FCRL2), transcript variant 2, 20 µg
Species:	Human
Expression Host:	HEK293T
Expression cDNA Clone or AA Sequence:	>RC221878 representing NM_030764 Red=Cloning site Green=Tags(s)

MLLWSELLVIFDAVTEQADSLTLVAPSSVFEGDSIVLKCQGEQNWKIQKMAYHKDNKELSVFKKFSDFLIQ
SAVLSDSGNYFCSTKQQLFLWDKTSNIVKIKVQELFQRPVLTASSFQPIEGGPVSLKCETRLSPQRDLVQ
LQFCFFRENQVLGSGWSSPELQISAVWSEDTGSYWCKAETVTHRIRKQSLQSQIHVQRIPISNVLSLEIR
APGGQVTEGQKLILLCSVAGGTGNVTFWSYREATGTSMGKKTQRSLSAELEIPAVKESDAGKYCRADNG
HVPIQSKVWNIPVRIPVSRPVLTLRSPGAQAAVGDILLEHCEALRGSPPILYQFYHEDVTLGNSSAPSGG
GASFNLSLTAEHSGNYSCEANGLGAQCSEAVPVSISGPDGYRRDLMTAGVLWGLFGVLGFTGVALLLYA
LFHKISGESSATNEPRGASRPNPQEFTYSSPTPDMEELQPVVYVNVGSVDVDVWYSQVWSMQQPESANIR
TLENKDSQVIYSSVKKS

TRTRPLEQKLISEEDLAANDILDYKDDDDKV

Tag:	C-Myc/DDK
Predicted MW:	53.4 kDa
Concentration:	>0.05 µg/µL as determined by microplate BCA method
Purity:	> 80% as determined by SDS-PAGE and Coomassie blue staining
Buffer:	25 mM Tris-HCl, 100 mM glycine, pH 7.3, 10% glycerol
Preparation:	Recombinant protein was captured through anti-DDK affinity column followed by conventional chromatography steps.
Note:	For testing in cell culture applications, please filter before use. Note that you may experience some loss of protein during the filtration process.
Storage:	Store at -80°C.
Stability:	Stable for 12 months from the date of receipt of the product under proper storage and handling conditions. Avoid repeated freeze-thaw cycles.



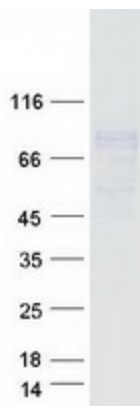
[View online »](#)

RefSeq:	NP_110391
Locus ID:	79368
UniProt ID:	Q96LA5 , B4E0W2
RefSeq Size:	2573
Cytogenetics:	1q23.1
RefSeq ORF:	1524
Synonyms:	CD307b; FCRH2; IFGP4; IRTA4; SPAP1; SPAP1A; SPAP1B; SPAP1C

Summary: This gene encodes a member of the immunoglobulin receptor superfamily and is one of several Fc receptor-like glycoproteins clustered on the long arm of chromosome 1. The encoded protein has four extracellular C2-type immunoglobulin domains, a transmembrane domain and a cytoplasmic domain that contains one immunoreceptor-tyrosine activation motif and two immunoreceptor-tyrosine inhibitory motifs. This protein may be a prognostic marker for chronic lymphocytic leukemia. Alternatively spliced transcript variants have been described, but their biological validity has not been determined. [provided by RefSeq, Apr 2009]

Protein Families: Druggable Genome, Transmembrane

Product images:



Coomassie blue staining of purified FCRL2 protein (Cat# TP321878). The protein was produced from HEK293T cells transfected with FCRL2 cDNA clone (Cat# [RC221878]) using MegaTran 2.0 (Cat# [TT210002]).