

## Product datasheet for **TP321874M**

### **IL6R (NM\_000565) Human Recombinant Protein**

#### Product data:

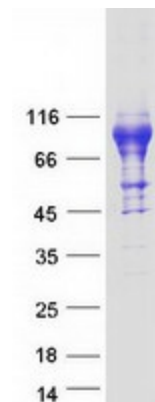
Product Type:	Recombinant Proteins
Description:	Recombinant protein of human interleukin 6 receptor (IL6R), transcript variant 1, 100 µg
Species:	Human
Expression Host:	HEK293T
Expression cDNA Clone or AA Sequence:	>RC221874 representing NM_000565 <b>Red</b> =Cloning site <b>Green</b> =Tags(s)
	MLAVGCALLAALLAAPGAALAPRRCPAQEVARGVLTSLPGDSVTLTCPGVEPEDNATVHWVLRKPAAGSH PSRWAGMGRLLLRSLVQLHDSGNYSYRAGRAGTVHLLVDVPPEEPQLSCFRKSPLSNVCEWGRSTP SLTTKAVLLVRKFQNSPAEDFQEPQYSQESQKFSCQLAVPEGDSSFYIVSMCVASSVGSKFSTQTFFQG CGILQPDPPANITVTAVARNPRWLSVTWQDPHSWNSSFYRLRFELRYAERSKTFTTWMVKDLQHHCVIH DAWSGLRHVVQLRAQEEFGQGEWSEWSPEAMGTPWTESRSPPAENEVSTPMQALTTNKDDDNLFRDSAN ATSLPVQASSSVPLPTFLVAGGSLAFGTLLCIAIVLRFKKTWKLRLALKEGKTSMHPPYSLGQLVPERPRP TPVLVPLISPPVSPSSLGSDNTSSHNRPDARDPRSPYDISNTDYFFPR
	<b>TRTRPLEQKLISEEDLAANDILDYKDDDDKV</b>
Tag:	C-Myc/DDK
Predicted MW:	49.8 kDa
Concentration:	>0.05 µg/µL as determined by microplate BCA method
Purity:	> 80% as determined by SDS-PAGE and Coomassie blue staining
Buffer:	25 mM Tris-HCl, 100 mM glycine, pH 7.3, 10% glycerol
Preparation:	Recombinant protein was captured through anti-DDK affinity column followed by conventional chromatography steps.
Note:	For testing in cell culture applications, please filter before use. Note that you may experience some loss of protein during the filtration process.
Storage:	Store at -80°C.
Stability:	Stable for 12 months from the date of receipt of the product under proper storage and handling conditions. Avoid repeated freeze-thaw cycles.
RefSeq:	<u><a href="#">NP_000556</a></u>



[View online »](#)

Locus ID:	3570
UniProt ID:	<a href="#">P08887</a>
RefSeq Size:	4176
Cytogenetics:	1q21.3
RefSeq ORF:	1404
Synonyms:	CD126; gp80; HIES5; IL-1Ra; IL-6R; IL-6R-1; IL-6RA; IL6Q; IL6QTL; IL6RA; IL6RQ
Summary:	This gene encodes a subunit of the interleukin 6 (IL6) receptor complex. Interleukin 6 is a potent pleiotropic cytokine that regulates cell growth and differentiation and plays an important role in the immune response. The IL6 receptor is a protein complex consisting of this protein and interleukin 6 signal transducer (IL6ST/GP130/IL6-beta), a receptor subunit also shared by many other cytokines. Dysregulated production of IL6 and this receptor are implicated in the pathogenesis of many diseases, such as multiple myeloma, autoimmune diseases and prostate cancer. Alternatively spliced transcript variants encoding distinct isoforms have been identified in this gene. A pseudogene of this gene is found on chromosome 9. [provided by RefSeq, Aug 2020]
Protein Families:	Druggable Genome, ES Cell Differentiation/IPS, Transmembrane
Protein Pathways:	Cytokine-cytokine receptor interaction, Hematopoietic cell lineage, Jak-STAT signaling pathway

### Product images:



Coomassie blue staining of purified IL6R protein (Cat# [TP321874]). The protein was produced from HEK293T cells transfected with IL6R cDNA clone (Cat# [RC221874]) using MegaTran 2.0 (Cat# [TT210002]).