

## Product datasheet for **TP321839M**

### **MASP1 (NM\_139125) Human Recombinant Protein**

#### **Product data:**

<b>Product Type:</b>	Recombinant Proteins
<b>Description:</b>	Recombinant protein of human mannan-binding lectin serine peptidase 1 (C4/C2 activating component of Ra-reactive factor) (MASP1), transcript variant 2, 100 µg
<b>Species:</b>	Human
<b>Expression Host:</b>	HEK293T
<b>Expression cDNA Clone or AA Sequence:</b>	>RC221839 protein sequence <b>Red</b> =Cloning site <b>Green</b> =Tags(s)

MRWLLLYALCFSLKASAHTVELNNMFGQIQSPGYDPSYPSDSEVTWNITVPDGFRIKLYFMHFNLESS  
YLCEYDYVKVETEDQVLATFCGRETTDTEQTPGQEVVLSPGSFMSTFRSDFSNEERFTGFDAHYMAVDV  
DECKEREDEELSCDHYCHNYIGGYCSCRFYILHTDNRTCRCVCSNLTQRTGVITSPDFPNYPKSS  
ECLYTIELEEGFMVNLQFEDIFDIEDHPEVPCPYDIKIKVGPVKVLPFCGEKAPEISTQSHSVLILFH  
SDNSGENRGWRLSYRAAGNECPQLPPVHGKIEPSQAKYFFKDQVLVSCDTGYKVLKDNVEMDTFQIECL  
KDGTSWNKIPTCKIVDCRAPGELEHGLITFSTRNNLTTYKSEIKYSCQEPYKMLNNTGIYTCSAQGVW  
MNKVLGRSLPTCLPECGQPSRSLPSLVKRIIGGRNAEPLFPWQALIVVEDTSRVPNDKWFSGGALLSAS  
WILTAHVLRQRDRTTIPVSKHEHTVYVYGLHLDVDRDKSGAVNSSAARVWLHPDFNIQNYNHDIALLVQLQ  
EPVPLGPHVMPVCLPRLEPEGPAPHMLGLVAGWGISNPNTVDEIISGTRTSLDVLQYVPLVPPHAEC  
KTSYESRSGNYSVTENMFCAGYYEGGKDTCLGDSGGAFVIFDDLSQRWVWQGLVSWGGPEECGSKQVYGV  
YTKVSNYVDWVWEQMGLPQSVVEPQVER

**TRTRPLEQKLISEEDLAANDILDYKDDDDKV**

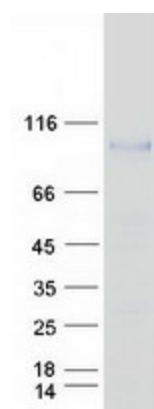
<b>Tag:</b>	C-Myc/DDK
<b>Predicted MW:</b>	48.6 kDa
<b>Concentration:</b>	>0.05 µg/µL as determined by microplate BCA method
<b>Purity:</b>	> 80% as determined by SDS-PAGE and Coomassie blue staining
<b>Buffer:</b>	25 mM Tris-HCl, 100 mM glycine, pH 7.3, 10% glycerol
<b>Preparation:</b>	Recombinant protein was captured through anti-DDK affinity column followed by conventional chromatography steps.
<b>Note:</b>	For testing in cell culture applications, please filter before use. Note that you may experience some loss of protein during the filtration process.



[View online »](#)

<b>Storage:</b>	Store at -80°C.
<b>Stability:</b>	Stable for 12 months from the date of receipt of the product under proper storage and handling conditions. Avoid repeated freeze-thaw cycles.
<b>RefSeq:</b>	<a href="#">NP_624302</a>
<b>Locus ID:</b>	5648
<b>UniProt ID:</b>	<a href="#">P48740</a>
<b>RefSeq Size:</b>	4184
<b>Cytogenetics:</b>	3q27.3
<b>RefSeq ORF:</b>	2184
<b>Synonyms:</b>	3MC1; CRARF; CRARF1; MAP-1; MAP1; MAp44; MASP; MASP-3; MASP3; PRSS5; RaRF
<b>Summary:</b>	This gene encodes a serine protease that functions as a component of the lectin pathway of complement activation. The complement pathway plays an essential role in the innate and adaptive immune response. The encoded protein is synthesized as a zymogen and is activated when it complexes with the pathogen recognition molecules of lectin pathway, the mannose-binding lectin and the ficolins. This protein is not directly involved in complement activation but may play a role as an amplifier of complement activation by cleaving complement C2 or by activating another complement serine protease, MASP-2. The encoded protein is also able to cleave fibrinogen and factor XIII and may be involved in coagulation. A splice variant of this gene which lacks the serine protease domain functions as an inhibitor of the complement pathway. Alternate splicing results in multiple transcript variants.[provided by RefSeq, Apr 2010]
<b>Protein Families:</b>	Druggable Genome, Protease
<b>Protein Pathways:</b>	Complement and coagulation cascades

### Product images:



Coomassie blue staining of purified MASP1 protein (Cat# [TP321839]). The protein was produced from HEK293T cells transfected with MASP1 cDNA clone (Cat# [RC221839]) using MegaTran 2.0 (Cat# [TT210002]).