

Product datasheet for **TP321806M**

C1orf222 (NM_001003808) Human Recombinant Protein

Product data:

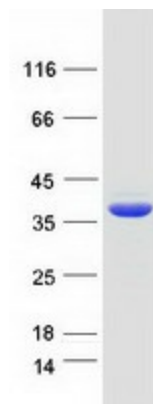
Product Type:	Recombinant Proteins
Description:	Recombinant protein of human chromosome 1 open reading frame 222 (C1orf222), 100 µg
Species:	Human
Expression Host:	HEK293T
Expression cDNA Clone or AA Sequence:	>RC221806 protein sequence Red =Cloning site Green =Tags(s)
	 MGTGVASMITCSIEGSLNMGYVIAGESVSSGFKLQNNLLPIKFSMHLDLSSTRGRGQQQLPQFLSSP SQRTEVVGTONLNGQSVFVAPVKGVM DPGKTQDFTVTFSPDHESLYFSDKLQVLFEEKISHQILLKGA ACQHMMFVEGGDPLDVPVESLTAIPVFDPRHREASSRPGPLSPEAEELRPILVTLTDYIQFDTDTAPPAT RELQVGCIRTTQSPKKTVEFSIDSVASLQHKGFSI ESRGSVERGQTKTISISWVPPADFDPDHPLMVS ALLQLRGDVKETYKVIFVAQVLTGP TRTRPLEQKLISEEDLAANDILDYKDDDDKV
Tag:	C-Myc/DDK
Predicted MW:	33 kDa
Concentration:	>0.05 µg/µL as determined by microplate BCA method
Purity:	> 80% as determined by SDS-PAGE and Coomassie blue staining
Buffer:	25 mM Tris-HCl, 100 mM glycine, pH 7.3, 10% glycerol
Preparation:	Recombinant protein was captured through anti-DDK affinity column followed by conventional chromatography steps.
Note:	For testing in cell culture applications, please filter before use. Note that you may experience some loss of protein during the filtration process.
Storage:	Store at -80°C.
Stability:	Stable for 12 months from the date of receipt of the product under proper storage and handling conditions. Avoid repeated freeze-thaw cycles.
RefSeq:	<u>NP_001003808</u>
Locus ID:	339457



[View online »](#)

RefSeq Size: 2824
 Cytogenetics: 1p36.33
 RefSeq ORF: 915
 Synonyms: MGC133181

Product images:



Coomassie blue staining of purified C1orf222 protein (Cat# [TP321806]). The protein was produced from HEK293T cells transfected with C1orf222 cDNA clone (Cat# [RC221806]) using MegaTran 2.0 (Cat# [TT210002]).