

Product datasheet for TP321803L

CPEB4 (NM_030627) Human Recombinant Protein

Product data:

| | |
|---------------------------------------|--|
| Product Type: | Recombinant Proteins |
| Description: | Recombinant protein of human cytoplasmic polyadenylation element binding protein 4 (CPEB4), 1 mg |
| Species: | Human |
| Expression Host: | HEK293T |
| Expression cDNA Clone or AA Sequence: | >RC221803 representing NM_030627 Red =Cloning site Green =Tags(s) |

MGDYGFGVLVQSNTGNKSAFPVRFPHLQPPHHHQNATPSPAAFINNNTAANGSSAGSAWLFAPATHNI
QDEILGSEKAKSQQQEQDPLEKQQLSPSPGQEAGILPETEKAKSEENQGDNSSENGNGKEKIRIESPVL
TGFQYQATGLGTSTQPLTSSASSLTGFSNWSAAIAPSSSTIINEDASFFHQGGVPAASANNALLFQNF
PHHVSPGFGGFSFPQIGPLSQHHPHHPHFQHHHSQHQQRRSPASPHPPPFTHRNAAFNQLPHLANLNK
PPSPWSSYQSPSPSSWSPGGGGYGGWGGSQGRDHRRGLNGGITPLNSISPLKKNFASNHIQLQKYAR
PSSAFAPKSWMEDSLNRADNIFPDRPRTFDMHSLESSLIDIMRAENDTIKGRNLNYSYPGSDSSLLINA
RTYGRRRGQSSLFPMEDGFLDDGRGDQPLHSGLSGPHCFSHQNGERVERYSRKVFVGGGLPPDIDEITA
SFRRFGPLIVDWPDKAESKSYFPPKGYAFLLFQDESSVQALIDACIEEDGKLYLCVSSPTIKDKPVQIRP
WNLSDSDFVMDGSQPLDPRKTI FVGGVPRPLRAVELAMIMDRLYGGVCYAGIDTDPKLYPKGAGRVAFS
NQQSYIAAISARFVQLQHGEIDKRVEVKPYVLDDQLCDECGARCGGKGFAPFFCANVTCLQYYCEYCWAA
IHSRAGREFHKPLVKEGGDRPRHISFRWN

TRTRPLEQKLISEEDLAANDILDYKDDDDKV

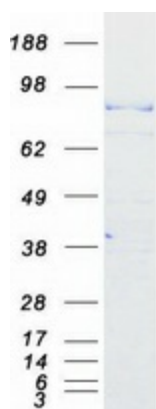
| | |
|----------------|--|
| Tag: | C-Myc/DDK |
| Predicted MW: | 80 kDa |
| Concentration: | >0.05 µg/µL as determined by microplate BCA method |
| Purity: | > 80% as determined by SDS-PAGE and Coomassie blue staining |
| Buffer: | 25 mM Tris-HCl, 100 mM glycine, pH 7.3, 10% glycerol |
| Preparation: | Recombinant protein was captured through anti-DDK affinity column followed by conventional chromatography steps. |
| Note: | For testing in cell culture applications, please filter before use. Note that you may experience some loss of protein during the filtration process. |



[View online »](#)

| | |
|---------------|---|
| Storage: | Store at -80°C. |
| Stability: | Stable for 12 months from the date of receipt of the product under proper storage and handling conditions. Avoid repeated freeze-thaw cycles. |
| RefSeq: | NP_085130 |
| Locus ID: | 80315 |
| UniProt ID: | Q17RY0 |
| RefSeq Size: | 6930 |
| Cytogenetics: | 5q35.2 |
| RefSeq ORF: | 2187 |
| Synonyms: | CPE-BP4; hCPEB-4 |
| Summary: | Sequence-specific RNA-binding protein that binds to the cytoplasmic polyadenylation element (CPE), an uridine-rich sequence element (consensus sequence 5'-UUUUUUAU-3') within the mRNA 3' UTR (PubMed:24990967). RNA binding results in a clear conformational change analogous to the Venus fly trap mechanism (PubMed:24990967). Regulates activation of unfolded protein response (UPR) in the process of adaptation to ER stress in liver, by maintaining translation of CPE-regulated mRNAs in conditions in which global protein synthesis is inhibited (By similarity). Required for cell cycle progression, specifically for cytokinesis and chromosomal segregation (PubMed:26398195). Plays a role as an oncogene promoting tumor growth and progression by positively regulating translation of t-plasminogen activator/PLAT (PubMed:22138752). Stimulates proliferation of melanocytes (PubMed:27857118). In contrast to CPEB1 and CPEB3, does not play role in synaptic plasticity, learning and memory (By similarity).[UniProtKB/Swiss-Prot Function] |

Product images:



Coomassie blue staining of purified CPEB4 protein (Cat# [TP321803]). The protein was produced from HEK293T cells transfected with CPEB4 cDNA clone (Cat# [RC221803]) using MegaTran 2.0 (Cat# [TT210002]).