

Product datasheet for **TP321798M**

RCC1 (NM_001269) Human Recombinant Protein

Product data:

| | |
|---------------------------------------|---|
| Product Type: | Recombinant Proteins |
| Description: | Recombinant protein of human regulator of chromosome condensation 1 (RCC1), transcript variant 3, 100 µg |
| Species: | Human |
| Expression Host: | HEK293T |
| Expression cDNA Clone or AA Sequence: | >RC221798 protein sequence Red =Cloning site Green =Tags(s) MSPKRIAKRRSPPADAIPKSKKVKVSHRSHSTEPGLVLTGQGQDVGQLGLGENVMERKKPALVSIPEDVW QAEAGGMHTVCLSKSGQVYSFGCNDEGALGRDTSVEGSEMVP GKVELQEKVQVSAGDSHTAALTDGGRV FLWGSFRDNNGVIGLLEPMKSMVPVQVQLDVPVVKVASGNDHLVMLTADGDLYLGCGEQQQLGRVPEL FANRGGRRQGLERLLVPKCVMLKSRGSRGHVRFQDAFCGAYFTFAISHEGHVYGFGLSNYHQLTGTPGTESC FIPQNLTSFKNSTKSWVGFSGGQHHTVCMDSEGKAYSLGRAEYGRLLGEGAEKSIPTLISRLPAVSSV ACGASVGYAVTKDGRVFAWGMGTNYQLGTGQDEDAWSPVEMMGKQLENRVVLSVSSGGQHTVLLVKDKEQ S TRTRPLEQKLISEEDLAANDILDYKDDDDKV |
| Tag: | C-Myc/DDK |
| Predicted MW: | 44.8 kDa |
| Concentration: | >0.05 µg/µL as determined by microplate BCA method |
| Purity: | > 80% as determined by SDS-PAGE and Coomassie blue staining |
| Buffer: | 25 mM Tris-HCl, 100 mM glycine, pH 7.3, 10% glycerol |
| Preparation: | Recombinant protein was captured through anti-DDK affinity column followed by conventional chromatography steps. |
| Note: | For testing in cell culture applications, please filter before use. Note that you may experience some loss of protein during the filtration process. |
| Storage: | Store at -80°C. |
| Stability: | Stable for 12 months from the date of receipt of the product under proper storage and handling conditions. Avoid repeated freeze-thaw cycles. |



[View online »](#)

RefSeq: [NP_001260](#)

Locus ID: 1104

UniProt ID: [P18754](#), [Q5T081](#)

RefSeq Size: 2540

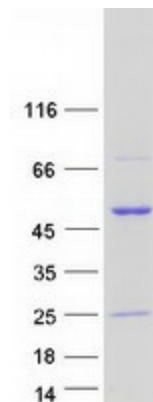
Cytogenetics: 1p35.3

RefSeq ORF: 1263

Synonyms: CHC1; RCC1-I; SNHG3-RCC1

Summary: Guanine-nucleotide releasing factor that promotes the exchange of Ran-bound GDP by GTP, and thereby plays an important role in RAN-mediated functions in nuclear import and mitosis (PubMed:1944575, PubMed:17435751, PubMed:20668449, PubMed:22215983, PubMed:11336674). Contributes to the generation of high levels of chromosome-associated, GTP-bound RAN, which is important for mitotic spindle assembly and normal progress through mitosis (PubMed:12194828, PubMed:17435751, PubMed:22215983). Via its role in maintaining high levels of GTP-bound RAN in the nucleus, contributes to the release of cargo proteins from importins after nuclear import (PubMed:22215983). Involved in the regulation of onset of chromosome condensation in the S phase (PubMed:3678831). Binds both to the nucleosomes and double-stranded DNA (PubMed:17435751, PubMed:18762580).[UniProtKB/Swiss-Prot Function]

Product images:



Coomassie blue staining of purified RCC1 protein (Cat# [TP321798]). The protein was produced from HEK293T cells transfected with RCC1 cDNA clone (Cat# [RC221798]) using MegaTran 2.0 (Cat# [TT210002]).