

Product datasheet for **TP321793M**

RAP1B (NM_001010942) Human Recombinant Protein

Product data:

Product Type:	Recombinant Proteins
Description:	Recombinant protein of human RAP1B, member of RAS oncogene family (RAP1B), transcript variant 2, 100 µg
Species:	Human
Expression Host:	HEK293T
Expression cDNA Clone or AA Sequence:	>RC221793 representing NM_001010942 Red =Cloning site Green =Tags(s)
	MREYKLVWLGSGGVGKSALTVQFVQGIFVEKYDPTIEDSYRKQVEVDAQQCMLILDTAGTEQFTAMRDL YMKNGQGFALVYSITAQSTFNDLQDLREQILRVKDTDDVPMILVGNKCDLEDERVVGKEQGQNLARQWNN CAFLESSAKSKINVNEIFYDLVRQINRKTPVPGKARKKSSCQLL
	TRTRPLEQKLISEEDLAANDILDYKDDDDKV
Tag:	C-Myc/DDK
Predicted MW:	20.6 kDa
Concentration:	>0.05 µg/µL as determined by microplate BCA method
Purity:	> 80% as determined by SDS-PAGE and Coomassie blue staining
Buffer:	25 mM Tris-HCl, 100 mM glycine, pH 7.3, 10% glycerol
Preparation:	Recombinant protein was captured through anti-DDK affinity column followed by conventional chromatography steps.
Note:	For testing in cell culture applications, please filter before use. Note that you may experience some loss of protein during the filtration process.
Storage:	Store at -80°C.
Stability:	Stable for 12 months from the date of receipt of the product under proper storage and handling conditions. Avoid repeated freeze-thaw cycles.
RefSeq:	NP_001010942
Locus ID:	5908
UniProt ID:	P61224 , A0A024RB87



[View online »](#)

RefSeq Size: 2117

Cytogenetics: 12q15

RefSeq ORF: 552

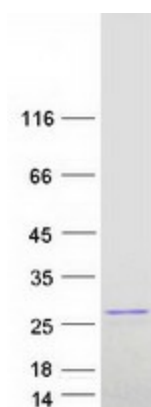
Synonyms: K-REV; RAL1B

Summary: This gene encodes a member of the RAS-like small GTP-binding protein superfamily. Members of this family regulate multiple cellular processes including cell adhesion and growth and differentiation. This protein localizes to cellular membranes and has been shown to regulate integrin-mediated cell signaling. This protein also plays a role in regulating outside-in signaling in platelets. Alternate splicing results in multiple transcript variants. Pseudogenes of this gene are found on chromosomes 3, 5, 6 and 9. [provided by RefSeq, Oct 2011]

Protein Families: Druggable Genome

Protein Pathways: Chemokine signaling pathway, Focal adhesion, Leukocyte transendothelial migration, Long-term potentiation, MAPK signaling pathway, Neurotrophin signaling pathway, Renal cell carcinoma

Product images:



Coomassie blue staining of purified RAP1B protein (Cat# [TP321793]). The protein was produced from HEK293T cells transfected with RAP1B cDNA clone (Cat# [RC221793]) using MegaTran 2.0 (Cat# [TT210002]).