

Product datasheet for **TP321773L**

Matrilin 3 (MATN3) (NM_002381) Human Recombinant Protein

Product data:

Product Type:	Recombinant Proteins
Description:	Recombinant protein of human matrilin 3 (MATN3), 1 mg
Species:	Human
Expression Host:	HEK293T
Expression cDNA Clone or AA Sequence:	>RC221773 representing NM_002381 Red=Cloning site Green=Tags(s)

MPRPAPARRLPGLLLLLWPLLLLPSAAPDPVARPGFRRLETRGPGGSPGRRPSPAAPDGAPASGTSEPGR
ARGAGVCKSRPLDLVFIIDSSRSVRPLEFTKVKTFSRIIDTLDIGPADTRVAVVNYASTVKIEFQLQAY
TDKQSLKQAVGRITPLSTGTMSGLAIQTAMDEAFTVEAGAREPSSNIPKVAIVTDGRPQDQVNEVAARA
QASGIELYAVGVDRADMASLKMMASEPLEEHVYVETYGVIEKLSSRFQETFCALDPCVLGTHQCQHVCV
SDGEGKHHCECSQGYTLNADKKTCSALDRCALNTHGCEHICVNDRSGSYHCECYEGYTLNEDRKTCSAQD
KCALGTHGCQHICVNDRTGSHHCECYEGYTLNADKKTCSVRDKCALGSHGCQHICVSDGAASYHCDCYPG
YTLNEDKKTCSATEEARRLVSTEDACGCEATLAFQDKVSSYLQRLNKLDDILEKLKINEYQIHR

TRTRPLEQKLISEEDLAANDILDYKDDDDKV

Tag:	C-Myc/DDK
Predicted MW:	49.7 kDa
Concentration:	>0.05 µg/µL as determined by microplate BCA method
Purity:	> 80% as determined by SDS-PAGE and Coomassie blue staining
Buffer:	25 mM Tris-HCl, 100 mM glycine, pH 7.3, 10% glycerol
Preparation:	Recombinant protein was captured through anti-DDK affinity column followed by conventional chromatography steps.
Note:	For testing in cell culture applications, please filter before use. Note that you may experience some loss of protein during the filtration process.
Storage:	Store at -80°C.
Stability:	Stable for 12 months from the date of receipt of the product under proper storage and handling conditions. Avoid repeated freeze-thaw cycles.
RefSeq:	NP_002372



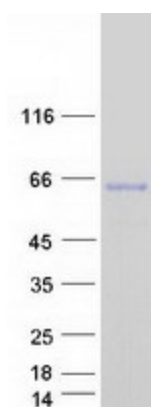
[View online »](#)

Locus ID: 4148
UniProt ID: [O15232](#)
RefSeq Size: 2599
Cytogenetics: 2p24.1
RefSeq ORF: 1458
Synonyms: DIPOA; EDM5; HOA; OADIP; OS2; SEMDBCD

Summary: This gene encodes a member of von Willebrand factor A domain containing protein family. This family of proteins is thought to be involved in the formation of filamentous networks in the extracellular matrices of various tissues. This protein contains two von Willebrand factor A domains; it is present in the cartilage extracellular matrix and has a role in the development and homeostasis of cartilage and bone. Mutations in this gene result in multiple epiphyseal dysplasia. [provided by RefSeq, Jul 2008]

Protein Families: Druggable Genome, Secreted Protein

Product images:



Coomassie blue staining of purified MATN3 protein (Cat# [TP321773]). The protein was produced from HEK293T cells transfected with MATN3 cDNA clone (Cat# [RC221773]) using MegaTran 2.0 (Cat# [TT210002]).