

## Product datasheet for **TP321745M**

### Pancreatic Lipase Related Protein 2 (PNLIPRP2) (NM\_005396) Human Recombinant Protein

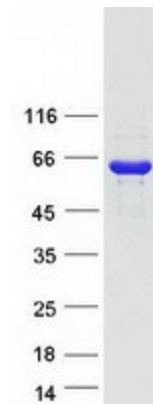
#### Product data:

Product Type:	Recombinant Proteins
Description:	Recombinant protein of human pancreatic lipase-related protein 2 (PNLIPRP2), 100 µg
Species:	Human
Expression Host:	HEK293T
Expression cDNA Clone or AA Sequence:	>RC221745 representing NM_005396 <b>Red</b> =Cloning site <b>Green</b> =Tags(s)
	MMLPPWTLGLLLLLATVRGKEVCYQQLGCFSDKWPAGTLQRPVKLLPWSPEDIDTRFLLYTNENPNNFQL ITGTEPDTIEASNFQLDRKTRFIIHGFLDKAEDSWPSDMCKKMFEVEKVNICVDWRHGSRAMYTQAVQN IRVVGAEAFLIQALSTQLGYSLEDVHVIGHSLGAHTAAEAGRRLGGRVGRITGLDPAGPCFQDEPEEVR LDPSDAVFVDVIHTDSSPIVPSLGFMSQKVGHLDFPNGGKEMPGCKKNVLTITDIDGIWEGIGGFVS CNHLRSFEYSSSVLNPDGFLGYPCASYDEFQESKCFPCPAEGCPKMGHYADQFKGKTSAVEQTFFLNTG ESGNFTSWRYKVSVTLSGKEKVNIGYIRIALYGSNENSKQYEIFKGSCLKPDASHTCAIDVDFNVGKIQKVK FLWNKRGINLSEPKLGASQITVQSGEDGTEYNFCSSDTVEENVLQSLYPC
	<b>TRTRPLEQKLISEEDLAANDILDYKDDDDKV</b>
Tag:	C-Myc/DDK
Predicted MW:	51.9 kDa
Concentration:	>0.05 µg/µL as determined by microplate BCA method
Purity:	> 80% as determined by SDS-PAGE and Coomassie blue staining
Buffer:	25 mM Tris-HCl, 100 mM glycine, pH 7.3, 10% glycerol
Preparation:	Recombinant protein was captured through anti-DDK affinity column followed by conventional chromatography steps.
Note:	For testing in cell culture applications, please filter before use. Note that you may experience some loss of protein during the filtration process.
Storage:	Store at -80°C.
Stability:	Stable for 12 months from the date of receipt of the product under proper storage and handling conditions. Avoid repeated freeze-thaw cycles.
RefSeq:	<u><a href="#">NP_005387</a></u>



[View online »](#)

Locus ID:	5408
UniProt ID:	<a href="#">P54317</a>
RefSeq Size:	1486
Cytogenetics:	10q25.3
RefSeq ORF:	1410
Synonyms:	PLRP2
Summary:	This gene encodes a lipase that hydrolyzes galactolipids, the main components of plant membrane lipids. An allelic polymorphism in this gene results in both coding and non-coding variants; the reference genome represents the non-coding allele. [provided by RefSeq, Aug 2015]
Protein Families:	Druggable Genome, Secreted Protein
Protein Pathways:	Glycerolipid metabolism, Metabolic pathways

**Product images:**

Coomassie blue staining of purified PNLIPRP2 protein (Cat# [TP321745]). The protein was produced from HEK293T cells transfected with PNLIPRP2 cDNA clone (Cat# [RC221745]) using MegaTran 2.0 (Cat# [TT210002]).