

Product datasheet for **TP321745L**

Pancreatic Lipase Related Protein 2 (PNLIPRP2) (NM_005396) Human Recombinant Protein

Product data:

Product Type: Recombinant Proteins

Description: Recombinant protein of human pancreatic lipase-related protein 2 (PNLIPRP2), 1 mg

Species: Human

Expression Host: HEK293T

Expression cDNA Clone or AA Sequence: >RC221745 representing NM_005396

Red=Cloning site Green=Tags(s)

MMLPPWTLGLLLLLATVRGKEVCYQQLGCFSDKWPAGTLQRPVKLLPWSPEDIDTRFLLYTNENPNNFQL
ITGTEPDTIEASNFQLDRKTRFIIHGFLDKAEDSWPSDMCKKMFVEKVNICVDWRHGSRAMYTQAVQN
IRVVGAEAFLIQALSTQLGYSLEDVHVIGHSLGAHTAAEAGRRLGGRVGRITGLDPAGPCFQDEPEEVR
LDPSDAVFVDVIHTDSSPIVPSLGFMSQKVGHLDFPNGGKEMPGCKKNVLTITDIDGIWEGIGGFVS
CNHLRSFEYSSSVLNPDGFLGYPCASYDEFQESKCFPCPAEGCPKMGHYADQFKGKTSAVEQTFFLNTG
ESGNFTSWRYKVSVTLSGKEKVNIGYIRIALYGSNENSKQYEIFKGSCLKPDASHTCAIDVDFNVGKIQKVK
FLWNKRGINLSEPKLGASQITVQSGEDGTEYNFCSSDTVEENVLQSLYPC

TRTRPLEQKLISEEDLAANDILDYKDDDDKV

Tag: C-Myc/DDK

Predicted MW: 51.9 kDa

Concentration: >0.05 µg/µL as determined by microplate BCA method

Purity: > 80% as determined by SDS-PAGE and Coomassie blue staining

Buffer: 25 mM Tris-HCl, 100 mM glycine, pH 7.3, 10% glycerol

Preparation: Recombinant protein was captured through anti-DDK affinity column followed by conventional chromatography steps.

Note: For testing in cell culture applications, please filter before use. Note that you may experience some loss of protein during the filtration process.

Storage: Store at -80°C.

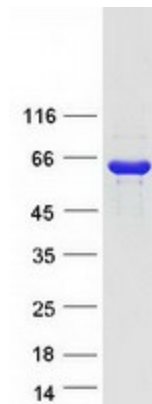
Stability: Stable for 12 months from the date of receipt of the product under proper storage and handling conditions. Avoid repeated freeze-thaw cycles.

RefSeq: [NP_005387](#)



[View online »](#)

Locus ID:	5408
UniProt ID:	P54317
RefSeq Size:	1486
Cytogenetics:	10q25.3
RefSeq ORF:	1410
Synonyms:	PLRP2
Summary:	This gene encodes a lipase that hydrolyzes galactolipids, the main components of plant membrane lipids. An allelic polymorphism in this gene results in both coding and non-coding variants; the reference genome represents the non-coding allele. [provided by RefSeq, Aug 2015]
Protein Families:	Druggable Genome, Secreted Protein
Protein Pathways:	Glycerolipid metabolism, Metabolic pathways

Product images:

Coomassie blue staining of purified PNLIPRP2 protein (Cat# [TP321745]). The protein was produced from HEK293T cells transfected with PNLIPRP2 cDNA clone (Cat# [RC221745]) using MegaTran 2.0 (Cat# [TT210002]).