

Product datasheet for TP321743M

CD11b (ITGAM) (NM_000632) Human Recombinant Protein

Product data:

Product Type: Recombinant Proteins
Description: Recombinant protein of human integrin, alpha M (complement component 3 receptor 3 subunit) (ITGAM), transcript variant 2, 100 µg
Species: Human
Expression Host: HEK293T
Expression cDNA Clone or AA Sequence: >RC221743 representing NM_000632
Red=Cloning site Green=Tags(s)

MALRVLLLTALTLC HGFNLDTENAMTFQENARGFGQSVVQLQGSRWVWGAPQEIVAANQRGSLYQCDYST
 GSCEPIRLQVPVEAVNMSLGLSLAATTSPPLLACGPTVHQTCESENTYVKGLCFLFGSNLRQQPKFPEA
 LRGCPQEDSDIAFLIDGSGSIIPHDFRRMKEFVSTVMEQLKKSRTLFLSMQYSEEFRIHFTFKEFQNNPN
 PRSLVKPITQLLGRTHATGIRKVVRELFNITNGARKNAFKILVITDGEKFGDPLGYEDVIPEADREGV
 IRYVIGVGDAFRSEKSRQELNTIASKPPRDHVFQVNNFEALKTIQNQLREKIFAIEGTQTGSSSSFEHEM
 SQEGFSAAITSNGPLLSTVGSYDWAGGVFLYTSKEKSTFINMTRVDSMDNDAYLGYAAAILRNVRVQSLV
 LGAPRYQHIGLVAMFRQNTGMWESNANVKGTQIGAYFGASLCSVDVDSNGSTDLVLIGAPHYEQTRGGQ
 VSVCLPLRGRARWQCDAVLYGEQGPWGRFGAALTVLGDVNGDKLTDVAIGAPGEEDNRGAVYLFHGTSG
 SGISPSHSQRIAGSKLSPRLQYFGQSLSGGQDLTMDGLVDLTVGAQGHVLLRSQPVLRVKAIMEFNPRE
 VARNVFECNDQVVKGKEAGEVRVCLHVQKSTRDRLREGQIQSVTYDLALDSGRPHSRVAFNETKNSTRR
 QTQVLGLTQT CETLKLQLPNCIEDPVSPVLRNLNFSLVGTPLSAFGNLRPVAEDAQR LFTALFPFEKNC
 GNDNICQDDLSITFSFMSLDCLVGGPREFNVTVTVRNDGEDSYRTQVTFPPDLDSYRKVSTLQNQRSQ
 RSWRLACESASSTEVS GALKSTSCSINHPIFPENSEVTFNITFDVDSKASLGNKLLKANVTSENNMPRT
 NKTEFQLELPVKYAVYMMVVTSHGVSTKYLNFTASENSTRVMQHQQVSNLGRSLPISLVFLVPVRLNQT
 VIWDRPQVTFSENLSSTCHTKERLPSHSDFLAELRKAPVWNCSIAVCQRIQCDIPFFGIQEEFNATLKGN
 LFDWYIKTSHNHLLIVSTAEILFNDSVFTLLPGQGAFVRSQTETKVEPFEVNPPLPLIVGSSVGGLLLL
 ALITAALYKLGFFKRQYKDMMSSEGGPPGAEPQ

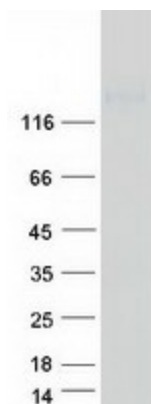
TRTRPLEQKLISEEDLAANDILDYKDDDDKV

Tag: C-Myc/DDK
Predicted MW: 125.4 kDa
Concentration: >0.05 µg/µL as determined by microplate BCA method
Purity: > 80% as determined by SDS-PAGE and Coomassie blue staining



[View online »](#)

Buffer:	25 mM Tris-HCl, 100 mM glycine, pH 7.3, 10% glycerol
Preparation:	Recombinant protein was captured through anti-DDK affinity column followed by conventional chromatography steps.
Note:	For testing in cell culture applications, please filter before use. Note that you may experience some loss of protein during the filtration process.
Storage:	Store at -80°C.
Stability:	Stable for 12 months from the date of receipt of the product under proper storage and handling conditions. Avoid repeated freeze-thaw cycles.
RefSeq:	NP_000623
Locus ID:	3684
UniProt ID:	P11215
RefSeq Size:	4740
Cytogenetics:	16p11.2
RefSeq ORF:	3456
Synonyms:	CD11B; CR3A; MAC-1; MAC1A; MO1A; SLEB6
Summary:	This gene encodes the integrin alpha M chain. Integrins are heterodimeric integral membrane proteins composed of an alpha chain and a beta chain. This I-domain containing alpha integrin combines with the beta 2 chain (ITGB2) to form a leukocyte-specific integrin referred to as macrophage receptor 1 ('Mac-1'), or inactivated-C3b (iC3b) receptor 3 ('CR3'). The alpha M beta 2 integrin is important in the adherence of neutrophils and monocytes to stimulated endothelium, and also in the phagocytosis of complement coated particles. Multiple transcript variants encoding different isoforms have been found for this gene. [provided by RefSeq, Mar 2009]
Protein Families:	Druggable Genome, ES Cell Differentiation/IPS, Transmembrane
Protein Pathways:	Cell adhesion molecules (CAMs), Hematopoietic cell lineage, Leukocyte transendothelial migration, Regulation of actin cytoskeleton

Product images:

Coomassie blue staining of purified ITGAM protein (Cat# [TP321743]). The protein was produced from HEK293T cells transfected with ITGAM cDNA clone (Cat# [RC221743]) using MegaTran 2.0 (Cat# [TT210002]).