

## Product datasheet for TP321743

### CD11b (ITGAM) (NM\_000632) Human Recombinant Protein

#### Product data:

Product Type:	Recombinant Proteins
Description:	Recombinant protein of human integrin, alpha M (complement component 3 receptor 3 subunit) (ITGAM), transcript variant 2, 20 µg
Species:	Human
Expression Host:	HEK293T
Expression cDNA Clone or AA Sequence:	>RC221743 representing NM_000632 <b>Red</b> =Cloning site <b>Green</b> =Tags(s)

MALRVLLLTALTLCHEFNLDTENAMTFQENARGFGQSVWLQGSRVVVGAPQEIVAANQRGSLYQCDYS  
T  
GSCEPIRLQVPVEAVNMSLGLSLAATTSPQQLLACGPTVHQTCESENTYVKGLCFLFGSNLRQQPKFPEA  
LRGCPQEDSDIAFLIDGSGSIIPHDFRRMKEFVSTVMEQLKKSRTLFSLMQYSEEFRIHFTKKEFQNNPN  
PRSLVKPITQLLGRTHATGIRKVVRELFNITNGARKNAFKILVITDGEKFGDPLGYEDVIPEADREGV  
IRYVIGVGDAFRSEKSRQELNTIASKPPRDHVFQVNNFEALKTIQNQLREKIFAIEGTQTGSSSSFEHEM  
SQEGFSAAITSNPGLLSTVGSYDWAGGVFLYTSKEKSTFINMTRVDSMNDAYLGYAAAILRNVRVQSLV  
LGAPRYQHIGLVAMFRQNTGMWESNANVKGTQIGAYFGASLCSVDVDSNGSTDLVLIGAPHYEQTRGG  
Q  
VSVCLPRGRARWQCDAVLYGEQQPWGRFGAALTVLGDVNGDKLTDVAIGAPGEEDNRGAVYLFHGTS  
G  
SGISPSHSQRIAGSKLSPRLQYFGQSLSGGQDLTMDGLVDLTVGAQGHVLLLRSPVLRVKAIMEFNPRE  
VARNVFECNDQVWKGKEAGEVRVCLHVQKSTRDRLREGQIQSVTYDLALDSGRPHSRAVFNETKNSTRR  
QTQVLGLTQTCETLKLQLPNCIEDPVSPIVLRLNFSLVGTPLSAFGNLRPVLAEDAQRFLTALFPFEKNC  
GNDNICQDDLSITFSFMSLDCLVGGPREFNVTVTVRNDGEDSYRTQVTFPPDLDSYRKVSTLQNRSQ  
RSWRLACESASSTEVSALKSTSCSINHPIFPENSEVTFNITFDVDSKASLGNKLLKANVTSENNMPRT  
NKTEFQLELPVKYAVYMVVTSHGVSSTKYLNFTASENSTRVMQHQYQVSNLGRSLPISLVFLVPVRLNQT  
VIWDRPQVTFSENLSSTCHTKERLPSHSDFLAELRKAPVNCIAVCQRIQCDIPFFGIQEEFNATLKG  
LSFDWYIKTSHNHLLIVSTAEILFNDSVFTLLPGQGAFVRSQTETKVEPFEVNPPLPLIVGSSVGGLLLL  
ALITAALYKLGFFKRQYKDMMSSEGGPPGAEPQ

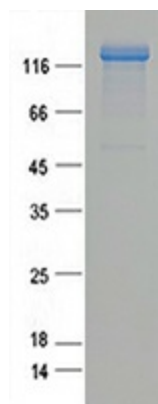
**TRTRPLEQKLISEEDLAANDILDYKDDDDKV**

Tag:	C-Myc/DDK
Predicted MW:	125.4 kDa



[View online »](#)

<b>Concentration:</b>	>0.05 µg/µL as determined by microplate BCA method
<b>Purity:</b>	> 80% as determined by SDS-PAGE and Coomassie blue staining
<b>Buffer:</b>	25 mM Tris-HCl, 100 mM glycine, pH 7.3, 10% glycerol
<b>Preparation:</b>	Recombinant protein was captured through anti-DDK affinity column followed by conventional chromatography steps.
<b>Note:</b>	For testing in cell culture applications, please filter before use. Note that you may experience some loss of protein during the filtration process.
<b>Storage:</b>	Store at -80°C.
<b>Stability:</b>	Stable for 12 months from the date of receipt of the product under proper storage and handling conditions. Avoid repeated freeze-thaw cycles.
<b>RefSeq:</b>	<a href="#">NP_000623</a>
<b>Locus ID:</b>	3684
<b>UniProt ID:</b>	<a href="#">P11215</a>
<b>RefSeq Size:</b>	4740
<b>Cytogenetics:</b>	16p11.2
<b>RefSeq ORF:</b>	3456
<b>Synonyms:</b>	CD11B; CR3A; MAC-1; MAC1A; MO1A; SLEB6
<b>Summary:</b>	This gene encodes the integrin alpha M chain. Integrins are heterodimeric integral membrane proteins composed of an alpha chain and a beta chain. This I-domain containing alpha integrin combines with the beta 2 chain (ITGB2) to form a leukocyte-specific integrin referred to as macrophage receptor 1 ('Mac-1'), or inactivated-C3b (iC3b) receptor 3 ('CR3'). The alpha M beta 2 integrin is important in the adherence of neutrophils and monocytes to stimulated endothelium, and also in the phagocytosis of complement coated particles. Multiple transcript variants encoding different isoforms have been found for this gene. [provided by RefSeq, Mar 2009]
<b>Protein Families:</b>	Druggable Genome, ES Cell Differentiation/IPS, Transmembrane
<b>Protein Pathways:</b>	Cell adhesion molecules (CAMs), Hematopoietic cell lineage, Leukocyte transendothelial migration, Regulation of actin cytoskeleton

**Product images:**

Coomassie blue staining of purified ITGAM protein (Cat# TP321743). The protein was produced from HEK293T cells transfected with ITGAM cDNA clone (Cat# [RC221743]) using MegaTran 2.0 (Cat# [TT210002]).