

Product datasheet for **TP321740**

CPT1A (NM_001876) Human Recombinant Protein

Product data:

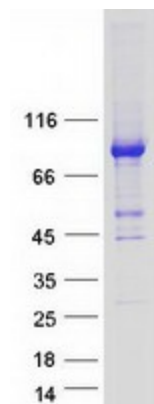
Product Type:	Recombinant Proteins
Description:	Recombinant protein of human carnitine palmitoyltransferase 1A (liver) (CPT1A), nuclear gene encoding mitochondrial protein, transcript variant 1, 20 µg
Species:	Human
Expression Host:	HEK293T
Expression cDNA Clone or AA Sequence:	>RC221740 representing NM_001876 Red =Cloning site Green =Tags(s)
	<p>MAEAHQAVAFQFTVTPDGIDLRLSHEALRQIYLSGLHSWKKKFIRFKNGIITGVYPASPSSWLIVVVGVM TTMYAKIDPSLGIIAKINRTLETANCMSSQTKNVVSGVLFGTGLWVALIVTMRYSLKVLLSYHGWMFTEH GKMSRATKIWMGMVKIFSGRKPMLYSFQTSPLRPLVPAVKDTVNRYLQSVRPLMKEEDFKRMTALAQDFA VGLGPRLQWYLKLSWWATNYVSDWWEYIYLRGRGPLMVNSNYAMDLLYILPTHIQAARAGNAIHAIL LYRRKLDREEIKPIRLLGSTIPLCSAQWERMFNSTSRIPGEETDTIQHMRDSKHIVVYHRGRYFKWLYHD GRLLKPREMEQQMQRILDNTSEPQPGEARLAALTAGDRVPWARCRQAYFGRGKKNKQSLDAVEKAAFFVTL DETEEGYRSEDPDTSMDSYAKSLLHGRCYDRWFDKSFTFVFKNGKMGLNAEHSWADAPIVAHLWEYVMS IDSLQLGYAEDGHCKGDINPNIPYPTRLQWDIPGECQEVETSLNTANLLANDVDFHSFPFVAFGKGIK KCRTSPDAFVQLALQLAHYKDMGKFCLTYEASMTRLFREGRTETVRSCCTTESCDFVRAMVDPAQTV EQRL KLFKLASEKHQHMYRLAMTGSGIDRHLFCLYVVS KYLAVESPFLKEVLSEPWRLSTSQTPQQQVELFDLE NNPEYVSSGGGFGPVADDGYGVSYILVGENLINFHISKFSCPETDSHRFGRHLKEAMTDIITLFG LSSN SKK</p> <p>TRTRPLEQKLISEEDLAANDILDYKDDDDKV</p>
Tag:	C-Myc/DDK
Predicted MW:	88.2 kDa
Concentration:	>0.05 µg/µL as determined by microplate BCA method
Purity:	> 80% as determined by SDS-PAGE and Coomassie blue staining
Buffer:	25 mM Tris-HCl, 100 mM glycine, pH 7.3, 10% glycerol
Preparation:	Recombinant protein was captured through anti-DDK affinity column followed by conventional chromatography steps.



[View online »](#)

Note:	For testing in cell culture applications, please filter before use. Note that you may experience some loss of protein during the filtration process.
Storage:	Store at -80°C.
Stability:	Stable for 12 months from the date of receipt of the product under proper storage and handling conditions. Avoid repeated freeze-thaw cycles.
RefSeq:	NP_001867
Locus ID:	1374
UniProt ID:	P50416 , A0A024R5F4 , Q8WZ48 , B2RAQ8
RefSeq Size:	2941
Cytogenetics:	11q13.3
RefSeq ORF:	2319
Synonyms:	CPT1; CPT1-L; L-CPT1
Summary:	The mitochondrial oxidation of long-chain fatty acids is initiated by the sequential action of carnitine palmitoyltransferase I (which is located in the outer membrane and is detergent-labile) and carnitine palmitoyltransferase II (which is located in the inner membrane and is detergent-stable), together with a carnitine-acylcarnitine translocase. CPT I is the key enzyme in the carnitine-dependent transport across the mitochondrial inner membrane and its deficiency results in a decreased rate of fatty acid beta-oxidation. Alternatively spliced transcript variants encoding different isoforms have been found for this gene. [provided by RefSeq, Jul 2008]
Protein Families:	Druggable Genome, Transmembrane
Protein Pathways:	Adipocytokine signaling pathway, Fatty acid metabolism, PPAR signaling pathway

Product images:



Coomassie blue staining of purified CPT1A protein (Cat# TP321740). The protein was produced from HEK293T cells transfected with CPT1A cDNA clone (Cat# [RC221740]) using MegaTran 2.0 (Cat# [TT210002]).