

## Product datasheet for TP321684SE

### OVGP1 (NM\_002557) Human Recombinant Protein

#### Product data:

Product Type:	Recombinant Proteins
Description:	Purified recombinant protein of Human oviductal glycoprotein 1, 120kDa (OVGP1), secretory expressed in HEK293T cells, 20ug
Species:	Human
Expression Host:	HEK293T
Expression cDNA Clone or AA Sequence:	>RC221684 protein sequence Red=Cloning site Green=Tags(s)

MWKLLLWVGLVVLKHHDDGAAHKLVCYFTNWAHSRPGPASILPHDLDPFLCTHLIFAFASMNNNQIVAKD  
LQDEKILYPEFNKLNKERNRELKTLISIGGWNFGTSRFTTMLSTFANREKFIASVISLLRTHDFDGLDLFF  
LYPGLRGSPMHDRWTFLLIEELLFAFRKEALLTMRPRLLSAAVSGVPHIVQTSYDVRFLGRLLDFINV  
LSYDLHGWERFTGHNSPLFSLPEDPKSSAYAMNYWRKLGAPSEKLIMGIPTYGRTFRLLKASKNGLQAR  
AIGPASPGKYTKQEGFLAYFEICSFVWGAKKHWIDYQYVPYANKGKEWGYDNAISFSYKAWFIRREHFG  
GAMVWTLDMDDVRGTFCGTGPFPLVYVLDILVRAEFSSTSLPQFWLSSAVNSSSTDPERLAVTTAWTTD  
SKILPPGGEAGVTEIHGKCNMTITPRGTTVTPTKETVSLGKHTVALGEKTEITGAMTMSVGHQSMTPG  
EKALTPVGHQSVTTGQKTLTSVGYQSVTPGKTLTPVGHQSVTPVSHQSVSPGGTMTMPVHFQTETLRQN  
TVAPRRKAVAREKVTVPSRNVSTPEGQTMPLRGENLTSEVGTHTPRMGNLGLQMEANRMLSSSPVIQL  
PEQTPLAFDNRVPIYGNHSSVNSVTPQTSPLSLKKEIPENSAVDEEA

TRTRPLEQKLISEEDLAANDILDYKDDDDKV

Tag:	C-Myc/DDK
Predicted MW:	76.6 kDa
Concentration:	>50 ug/mL as determined by microplate Bradford method
Purity:	> 80% as determined by SDS-PAGE and Coomassie blue staining
Buffer:	25mM Tris-HCl, pH7.3, 100mM glycine, 10% glycerol
Note:	For culture applications, please filter before use. Note that you may experience some loss of protein during the filtration process.
Storage:	Store at -80°C after receiving vials.
Stability:	Stable for at least 1 year from receipt of products under proper storage and handling conditions. Avoid repeated freeze-thaw cycles.



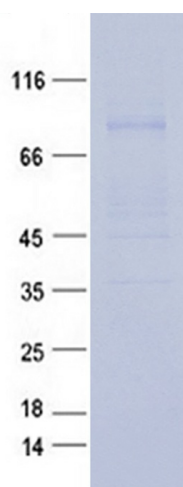
[View online »](#)

RefSeq:	<a href="#">NP_002548</a>
Locus ID:	5016
UniProt ID:	<a href="#">Q12889</a> , <a href="#">Q86YN0</a>
RefSeq Size:	2258
Cytogenetics:	1p13.2
RefSeq ORF:	2034
Synonyms:	CHIT5; EGP; MUC9; OGP

**Summary:** This gene encodes a large, carbohydrate-rich, epithelial glycoprotein with numerous O-glycosylation sites located within threonine, serine, and proline-rich tandem repeats. The gene is similar to members of the mucin and the glycosyl hydrolase 18 gene families. Regulation of expression may be estrogen-dependent. Gene expression and protein secretion occur during late follicular development through early cleavage-stage embryonic development. The protein is secreted from non-ciliated oviductal epithelial cells and associates with ovulated oocytes, blastomeres, and spermatozoan acrosomal regions. [provided by RefSeq, Jul 2008]

**Protein Families:** Secreted Protein

### Product images:



Coomassie blue staining of purified OVGP1 protein (Cat #TP321684SE). The protein was produced from mammalian cells transfected with OVGP1 cDNA clone (Cat #[RC221684]).