

Product datasheet for **TP321684M**

OVGP1 (NM_002557) Human Recombinant Protein

Product data:

Product Type:	Recombinant Proteins
Description:	Recombinant protein of human oviductal glycoprotein 1, 120kDa (OVGP1), 100 µg
Species:	Human
Expression Host:	HEK293T
Expression cDNA Clone or AA Sequence:	>RC221684 protein sequence Red =Cloning site Green =Tags(s)

MWKLLLWVGLVVLKHHDDGAAHKLVCYFTNWAHSRPGPASILPHDLDPFLCTHLIFAFASMNNNQIVAKD
LQDEKILYPEFNKLNKERNRELKLLSIGGWNFGTSRFTTMLSTFANREKFIASVISLLRTHDFDGLDLFF
LYPGLRGSPMHDRWTFLELIEELLFAFRKEALLTMRPRLLSAAVSGVPHIVQTSYDVRFLGRLLDFINV
LSYDLHGWERFTGHNSPLFSLPEDPKSSAYAMNYWRKLGAPSEKLIMGIPTYGRTFRLKASKNGLQAR
AIGPASPGKYTKQEGFLAYFEICSFVWGAKKHWDYQYVPYANKGKEWGYDNAISFSYKAWFIRREHFG
GAMVWTLDMDDVRGTFCGTGFPLVYVLDILVRAEFSSTSLPQFWLSSAVNSSSTDPERLAVTTAWTTD
SKILPPGGEAGVTEIHGKCENMTITPRGTTVTPTKETVSLGKHTVALGEKTEITGAMTMTSVGHQSMTPG
EKALTPVGHQSVTGQKTLTSVGYQSVTPGEKLTLPVGHQSVPVSHQSVSPGGTMTMPVHFQTETLRQN
TVAPRRKAVAREKVTVPSRNVSTPEGQTMPLRGENLTSEVGTHTPRMGNLGLQMEANRMMLSSSPVIQL
PEQTPLAFDNRFVPIYGNHSSVNSVTPQTSPLSLKKEIPENSAVDEEA

TRTRPLEQKLISEEDLAANDILDYKDDDDKV

Tag:	C-Myc/DDK
Predicted MW:	75.2 kDa
Concentration:	>0.05 µg/µL as determined by microplate BCA method
Purity:	> 80% as determined by SDS-PAGE and Coomassie blue staining
Buffer:	25 mM Tris-HCl, 100 mM glycine, pH 7.3, 10% glycerol
Preparation:	Recombinant protein was captured through anti-DDK affinity column followed by conventional chromatography steps.
Note:	For testing in cell culture applications, please filter before use. Note that you may experience some loss of protein during the filtration process.
Storage:	Store at -80°C.



[View online »](#)

Stability: Stable for 12 months from the date of receipt of the product under proper storage and handling conditions. Avoid repeated freeze-thaw cycles.

RefSeq: [NP_002548](#)

Locus ID: 5016

UniProt ID: [Q12889](#), [Q86YN0](#)

RefSeq Size: 2258

Cytogenetics: 1p13.2

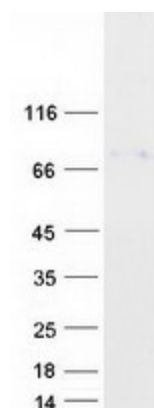
RefSeq ORF: 2034

Synonyms: CHIT5; EGP; MUC9; OGP

Summary: This gene encodes a large, carbohydrate-rich, epithelial glycoprotein with numerous O-glycosylation sites located within threonine, serine, and proline-rich tandem repeats. The gene is similar to members of the mucin and the glycosyl hydrolase 18 gene families. Regulation of expression may be estrogen-dependent. Gene expression and protein secretion occur during late follicular development through early cleavage-stage embryonic development. The protein is secreted from non-ciliated oviductal epithelial cells and associates with ovulated oocytes, blastomeres, and spermatozoan acrosomal regions. [provided by RefSeq, Jul 2008]

Protein Families: Secreted Protein

Product images:



Coomassie blue staining of purified OVGP1 protein (Cat# [TP321684]). The protein was produced from HEK293T cells transfected with OVGP1 cDNA clone (Cat# [RC221684]) using MegaTran 2.0 (Cat# [TT210002]).