

Product datasheet for **TP321684L**

OVGP1 (NM_002557) Human Recombinant Protein

Product data:

Product Type: Recombinant Proteins

Description: Recombinant protein of human oviductal glycoprotein 1, 120kDa (OVGP1), 1 mg

Species: Human

Expression Host: HEK293T

Expression cDNA Clone or AA Sequence: >RC221684 protein sequence
Red=Cloning site **Green**=Tags(s)

MWKLLLWVGLVLVLKHHDGAAHKLVCYFTNWAHSRPGPASILPHDLDPFLCTHLIFAFASMMNNNQIVAKD
LQDEKILYPEFNKLKERNRELKTLISIGGWNFGTSRFTTMLSTFANREKFASVISLLRTHDFDGLDLFF
LYPGLRGSPMHDRWTFLLIEELLFAFRKEALLTMRPRLLSAAVSGVPHIVQTSYDVRFLGRLLDFINV
LSYDLHGWERFTGHNSPLFSLPEDPKSSAYAMNYWRKLGAPSEKLIMGIPTYGRTFRLKASKNGLQAR
AIGPASPGKYTKQEGFLAYFEICSFVWGAKKHWIDYQYVPYANKGKEWVGYNDAISFSYKAWFIRREHFG
GAMVWTLDMDDVRGTFCGTGPFPLVYVLNDILVRAEFSSTSLPQFWLSSAVNSSSTDPERLAVTTAWTTD
SKILPPGGEAGVTEIHGKCENMTITPRGTTVTPTKETVSLGKHTVALGEKTEITGAMTMTSVGHQSMTPG
EKALTPVGHQSVTTGQKTLTSVGYSVTPGEKLTLPVGHQSVTPVSHQSVSPGGTMTMPVHFQTETLRQN
TVAPRRKAVAREKVTPSRNISVTPEGQTMPLRGENLTSEVGTHPRMGNLGLQMEAENRMMLSSSPVIQL
PEQTPLAFDNRVPIYGNHSSVNSVTPQTSPLSLKKEIPENSAVDEEA

TRTRPLEQKLISEEDLAANDILDYKDDDDKV

Tag: C-Myc/DDK

Predicted MW: 75.2 kDa

Concentration: >0.05 µg/µL as determined by microplate BCA method

Purity: > 80% as determined by SDS-PAGE and Coomassie blue staining

Buffer: 25 mM Tris-HCl, 100 mM glycine, pH 7.3, 10% glycerol

Preparation: Recombinant protein was captured through anti-DDK affinity column followed by conventional chromatography steps.

Note: For testing in cell culture applications, please filter before use. Note that you may experience some loss of protein during the filtration process.

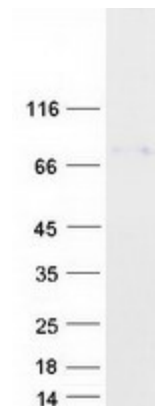
Storage: Store at -80°C.



[View online »](#)

Stability:	Stable for 12 months from the date of receipt of the product under proper storage and handling conditions. Avoid repeated freeze-thaw cycles.
RefSeq:	<u>NP_002548</u>
Locus ID:	5016
UniProt ID:	<u>Q12889, Q86YN0</u>
RefSeq Size:	2258
Cytogenetics:	1p13.2
RefSeq ORF:	2034
Synonyms:	CHIT5; EGP; MUC9; OGP
Summary:	This gene encodes a large, carbohydrate-rich, epithelial glycoprotein with numerous O-glycosylation sites located within threonine, serine, and proline-rich tandem repeats. The gene is similar to members of the mucin and the glycosyl hydrolase 18 gene families. Regulation of expression may be estrogen-dependent. Gene expression and protein secretion occur during late follicular development through early cleavage-stage embryonic development. The protein is secreted from non-ciliated oviductal epithelial cells and associates with ovulated oocytes, blastomeres, and spermatozoan acrosomal regions. [provided by RefSeq, Jul 2008]
Protein Families:	Secreted Protein

Product images:



Coomassie blue staining of purified OVGP1 protein (Cat# [TP321684]). The protein was produced from HEK293T cells transfected with OVGP1 cDNA clone (Cat# [RC221684]) using MegaTran 2.0 (Cat# [TT210002]).