

## Product datasheet for TP321680L

### CLEC2D (NM\_001004419) Human Recombinant Protein

#### Product data:

Product Type:	Recombinant Proteins
Description:	Recombinant protein of human C-type lectin domain family 2, member D (CLEC2D), transcript variant 2, 1 mg
Species:	Human
Expression Host:	HEK293T
Expression cDNA Clone or AA Sequence:	>RC221680 representing NM_001004419 <b>Red</b> =Cloning site <b>Green</b> =Tags(s)

MHDSNNVEKDITPSEL PANPGCLHSKEHSIKATLIWRLFFLIMFLTIIVCGMVAALS AIRANCHQEPSVC  
LQAACPESWIGFQRKCFYFSDDTKNWTSSQRFCDSQDADLAQVESFQELNFLRLRYKGPSDHWIGLSREQQ  
QPWKWINGTEWTRQLVMKEDGANLYVAKVSQVPRMNPVPMVSYPGSRRVCLFE

**TRTRPLEQKLISEEDLAANDILDYKDDDDKV**

Tag:	C-Myc/DDK
Predicted MW:	22.1 kDa
Concentration:	>0.1 µg/µL as determined by microplate BCA method
Purity:	> 80% as determined by SDS-PAGE and Coomassie blue staining
Buffer:	25 mM Tris-HCl, 100 mM glycine, pH 7.3, 10% glycerol
Preparation:	Recombinant protein was captured through anti-DDK affinity column followed by conventional chromatography steps.
Note:	For testing in cell culture applications, please filter before use. Note that you may experience some loss of protein during the filtration process.
Storage:	Store at -80°C.
Stability:	Stable for 12 months from the date of receipt of the product under proper storage and handling conditions. Avoid repeated freeze-thaw cycles.
RefSeq:	<a href="#">NP_001004419</a>
Locus ID:	29121
UniProt ID:	<a href="#">Q9UHP7</a>



[View online »](#)

RefSeq Size: 1821

Cytogenetics: 12p13.31

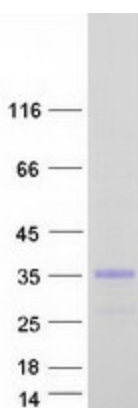
RefSeq ORF: 582

Synonyms: CLAX; LLT1; OCIL

**Summary:** This gene encodes a member of the natural killer cell receptor C-type lectin family. The encoded protein inhibits osteoclast formation and contains a transmembrane domain near the N-terminus as well as the C-type lectin-like extracellular domain. Several alternatively spliced transcript variants have been identified for this gene. [provided by RefSeq, Oct 2010]

**Protein Families:** Druggable Genome, Transmembrane

### Product images:



Coomassie blue staining of purified CLEC2D protein (Cat# [TP321680]). The protein was produced from HEK293T cells transfected with CLEC2D cDNA clone (Cat# [RC221680]) using MegaTran 2.0 (Cat# [TT210002]).