

## Product datasheet for TP321637M

### MAP2 (NM\_031845) Human Recombinant Protein

#### Product data:

Product Type:	Recombinant Proteins
Description:	Recombinant protein of human microtubule-associated protein 2 (MAP2), transcript variant 2, 100 µg
Species:	Human
Expression Host:	HEK293T
Expression cDNA Clone or AA Sequence:	>RC221637 representing NM_031845 Red=Cloning site Green=Tags(s)

MADERKDEAKAPHWTSAPLTEASAHSHPPPEIKDQGGAGEGLVRSANGFPYREDEEGAFGEHGSQGTYSNT  
KENGINGELTSADRETAEEVSARIVQVVTAEAVAVLKGEQEKEAQHKDQTAALPLAETANLPPSPPPSP  
ASEQTVTVEEAAGGESALAPSVFKQAKDKVSDGVTKSPEKRSSLPRSSILPPRRGVSGDRDENSFSLNS  
SISSSARRTRSEPIRRAGKSGTSTPTTPGSTAITPGTPPSYSSRTPGTPGTPSPYRTPHTPGTPKSAIL  
VPSEKKVAIIRTTPPKSPATPKQLRLINQLPLDLKNVKSIGSTDNIKYQPKGGQVQIVTKKIDLSHVTSK  
CGSLKNIRHRPGGGGRVKIESVKLDFKEKAQAKVGSLDNAHHVPGGGNVKIDSQKLNFRHAKARVDHGAE  
IITQSPGRSSVASPRRLSNVSSSGSINLLESPQLATLAEDVTAALAKQGL

TRTRPLEQKLISEEDLAANDILDYKDDDDKV

Tag:	C-Myc/DDK
Predicted MW:	49.5 kDa
Concentration:	>0.05 µg/µL as determined by microplate BCA method
Purity:	> 80% as determined by SDS-PAGE and Coomassie blue staining
Buffer:	25 mM Tris-HCl, 100 mM glycine, pH 7.3, 10% glycerol
Preparation:	Recombinant protein was captured through anti-DDK affinity column followed by conventional chromatography steps.
Note:	For testing in cell culture applications, please filter before use. Note that you may experience some loss of protein during the filtration process.
Storage:	Store at -80°C.
Stability:	Stable for 12 months from the date of receipt of the product under proper storage and handling conditions. Avoid repeated freeze-thaw cycles.



[View online »](#)

RefSeq: [NP\\_114033](#)

Locus ID: 4133

UniProt ID: [P11137](#), [A0A024R409](#)

RefSeq Size: 2466

Cytogenetics: 2q34

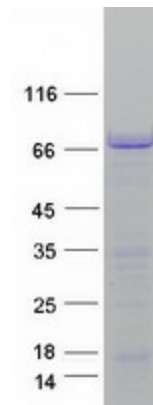
RefSeq ORF: 1410

Synonyms: MAP-2; MAP2A; MAP2B; MAP2C

**Summary:** This gene encodes a protein that belongs to the microtubule-associated protein family. The proteins of this family are thought to be involved in microtubule assembly, which is an essential step in neurogenesis. The products of similar genes in rat and mouse are neuron-specific cytoskeletal proteins that are enriched in dendrites, implicating a role in determining and stabilizing dendritic shape during neuron development. A number of alternatively spliced variants encoding distinct isoforms have been described. [provided by RefSeq, Jan 2010]

**Protein Families:** Adult stem cells, Druggable Genome, ES Cell Differentiation/IPS

### Product images:



Coomassie blue staining of purified MAP2 protein (Cat# [TP321637]). The protein was produced from HEK293T cells transfected with MAP2 cDNA clone (Cat# [RC221637]) using MegaTran 2.0 (Cat# [TT210002]).