

Product datasheet for **TP321636L**

Cytochrome P450 1A2 (CYP1A2) (NM_000761) Human Recombinant Protein

Product data:

| | |
|---------------------------------------|---|
| Product Type: | Recombinant Proteins |
| Description: | Recombinant protein of human cytochrome P450, family 1, subfamily A, polypeptide 2 (CYP1A2), 1 mg |
| Species: | Human |
| Expression Host: | HEK293T |
| Expression cDNA Clone or AA Sequence: | >RC221636 representing NM_000761 Red =Cloning site Green =Tags(s) |

MALSQSVPFSAPELLLASAIFCLVFWWLKGLRPRVPKGLKSPPEPWGWPLLGHVLTGKNPHLALSRMSQ
RYGDVLQIRIGSTPVLVLSRLDTIRQALVRQGDDFKGRPDLYTSTLITDGQSLTFSTDSGPVWAARRRLA
QNALNTFSIASDPASSSSCYLEEHVSKEAKALISRLQELMAGPGHFDYPNQVVSVANVIGAMCFGQHFP
ESSDEMLSLVKNTHEFVETASSGNPLDFFPILRYLPNPALQRKAFNQRFWFLQKTVQEHYQDFDKNSV
RDITGALFKHSSKGPASGNLIPQEKIVNLVNDIFGAGFDVTTAISWSLMYLVTKPEIQRKIQKELDTV
IGRERRPRLSDRPQLPYLEAFILETFRHSSFLPFTIPHSTTRDRTLNGFYIPKCCVFVNQWQVNHDPPEL
WEDPSEFRPERFLTADGTAINKPLSEKMMMLFGMGKRRRCIGEVLAKEIFLFLAILLQQLFEFSVPPGVKVD
LTPYGLTMKHARCEHVQARLRFSIN

TRTRPLEQKLISEEDLAANDILDYKDDDDKV

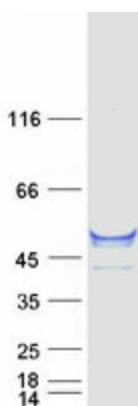
| | |
|----------------|--|
| Tag: | C-Myc/DDK |
| Predicted MW: | 58.2 kDa |
| Concentration: | >0.05 µg/µL as determined by microplate BCA method |
| Purity: | > 80% as determined by SDS-PAGE and Coomassie blue staining |
| Buffer: | 25 mM Tris-HCl, 100 mM glycine, pH 7.3, 10% glycerol |
| Preparation: | Recombinant protein was captured through anti-DDK affinity column followed by conventional chromatography steps. |
| Note: | For testing in cell culture applications, please filter before use. Note that you may experience some loss of protein during the filtration process. |
| Storage: | Store at -80°C. |



[View online »](#)

| | |
|--------------------------|---|
| Stability: | Stable for 12 months from the date of receipt of the product under proper storage and handling conditions. Avoid repeated freeze-thaw cycles. |
| RefSeq: | NP_000752 |
| Locus ID: | 1544 |
| UniProt ID: | P05177 |
| RefSeq Size: | 3127 |
| Cytogenetics: | 15q24.1 |
| RefSeq ORF: | 1548 |
| Synonyms: | CP12; CYP1A2; P3-450; P450(PA) |
| Summary: | This gene encodes a member of the cytochrome P450 superfamily of enzymes. The cytochrome P450 proteins are monooxygenases which catalyze many reactions involved in drug metabolism and synthesis of cholesterol, steroids and other lipids. The protein encoded by this gene localizes to the endoplasmic reticulum and its expression is induced by some polycyclic aromatic hydrocarbons (PAHs), some of which are found in cigarette smoke. The enzyme's endogenous substrate is unknown; however, it is able to metabolize some PAHs to carcinogenic intermediates. Other xenobiotic substrates for this enzyme include caffeine, aflatoxin B1, and acetaminophen. The transcript from this gene contains four Alu sequences flanked by direct repeats in the 3' untranslated region. [provided by RefSeq, Jul 2008] |
| Protein Families: | Druggable Genome, P450, Transmembrane |
| Protein Pathways: | Caffeine metabolism, Drug metabolism - cytochrome P450, Linoleic acid metabolism, Metabolic pathways, Metabolism of xenobiotics by cytochrome P450, Retinol metabolism, Tryptophan metabolism |

Product images:



Coomassie blue staining of purified CYP1A2 protein (Cat# [TP321636]). The protein was produced from HEK293T cells transfected with CYP1A2 cDNA clone (Cat# [RC221636]) using MegaTran 2.0 (Cat# [TT210002]).