

## Product datasheet for **TP321606M**

### CD61 (ITGB3) (NM\_000212) Human Recombinant Protein

#### Product data:

Product Type:	Recombinant Proteins
Description:	Recombinant protein of human integrin, beta 3 (platelet glycoprotein IIIa, antigen CD61) (ITGB3), 100 µg
Species:	Human
Expression Host:	HEK293T
Expression cDNA Clone or AA Sequence:	>Peptide sequence encoded by RC221606 Blue=ORF Red=Cloning site Green=Tag(s)

MRARPRRPLWATVLAALGALAGVGVGGPNICTTRGVSSCQQLAVSPMCAWCSDEALPLGSPRCDLKEN  
LLKDNCAPIESIEFPVSEARVLEDRPLSDKSGDSSQVTQVSPQRALRLRPDDSKNFSIQVRQVEDYPV  
DIYLMDSLVSIMKDDLWSIQNLGTLATQMRKLTSLNRIGFGAFVDKPVSPYMYISPPEALENPCYDMK  
TTCLPMFGYKHVLTLDQVTRFNVEEVKKQSVSRNRDAPEGGFDAIMQATVCDEKIGWRNDASHLLVFTT  
DAKTHIALDGRLAGIVQPNMGQCHVGSNDHYSASTTMDYPSLGLMTEKLSQKNINLIFAVTENVNLYQ  
NYSELIPGTTVGVLSMDSSNLQLIVDAYGKIRSKVELEVRDLPEELSLSFNATCLNNEVIPGLKSCMG  
LKIGDVSFSIEAKVRGCPQEKEKSFTIKPVGFKDSLIVQVTFDCDCACQAQAEPNSHRCNNGNGTFEC  
GVCRCGPWLGSQLCESEEDYRPSQQDECSREGQPVCSQRGECLCGQCVCHSSDFGKITGKYCECDF  
SCVRYKMGEMCSGHGQCSCGDCLCSDWTGYCNCCTTRTDCMSSNLLCSGRGKCECGSCVCIQPGSYG  
DTCEKPTCPDACTFKKECVECKKFDRLGALHDENTCNRYCRDEIESVKELKDTGKDAVNCTYKNEDDCV  
VRFQYEDSSGKSILYVWEEPECPKGPDIWLLSVMGAILLIGLAALLIWKLLITIHDRKEFAKFEED  
RARAKWDTANNPLYKEATSTFTNITYRGT  
SGPTRTRPLEQKLISEEDLAANDILDYKDDDDKV

Recombinant protein using RC221606 also available, [TP321606](#)

Tag:	C-Myc/DDK
Predicted MW:	84.3 kDa
Concentration:	>0.05 µg/µL as determined by microplate BCA method
Purity:	> 80% as determined by SDS-PAGE and Coomassie blue staining
Buffer:	25 mM Tris-HCl, 100 mM glycine, pH 7.3, 10% glycerol
Preparation:	Recombinant protein was captured through anti-DDK affinity column followed by conventional chromatography steps.



[View online »](#)

**Note:** For testing in cell culture applications, please filter before use. Note that you may experience some loss of protein during the filtration process.

**Storage:** Store at -80°C.

**Stability:** Stable for 12 months from the date of receipt of the product under proper storage and handling conditions. Avoid repeated freeze-thaw cycles.

**RefSeq:** [NP\\_000203](#)

**Locus ID:** 3690

**UniProt ID:** [P05106](#)

**RefSeq Size:** 4894

**Cytogenetics:** 17q21.32

**RefSeq ORF:** 2364

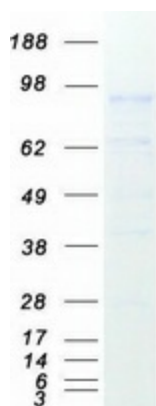
**Synonyms:** BDPLT2; BDPLT16; BDPLT24; CD61; GP3A; GPIIIa; GT; GT2

**Summary:** The ITGB3 protein product is the integrin beta chain beta 3. Integrins are integral cell-surface proteins composed of an alpha chain and a beta chain. A given chain may combine with multiple partners resulting in different integrins. Integrin beta 3 is found along with the alpha IIb chain in platelets. Integrins are known to participate in cell adhesion as well as cell-surface mediated signalling. [provided by RefSeq, Jul 2008]

**Protein Families:** Druggable Genome, ES Cell Differentiation/IPS, Transmembrane

**Protein Pathways:** Arrhythmogenic right ventricular cardiomyopathy (ARVC), Dilated cardiomyopathy, ECM-receptor interaction, Focal adhesion, Hematopoietic cell lineage, Hypertrophic cardiomyopathy (HCM), Regulation of actin cytoskeleton

### Product images:



Coomassie blue staining of purified ITGB3 protein (Cat# [TP321606]). The protein was produced from HEK293T cells transfected with ITGB3 cDNA clone (Cat# [RC221606]) using MegaTran 2.0 (Cat# [TT210002]).