

Product datasheet for **TP321606L**

CD61 (ITGB3) (NM_000212) Human Recombinant Protein

Product data:

Product Type:	Recombinant Proteins
Description:	Recombinant protein of human integrin, beta 3 (platelet glycoprotein IIIa, antigen CD61) (ITGB3), 1 mg
Species:	Human
Expression Host:	HEK293T
Expression cDNA Clone or AA Sequence:	>Peptide sequence encoded by RC221606 Blue=ORF Red=Cloning site Green=Tag(s)

MRARPRRPLWATVLAALGALAGVGVGGPNICTTRGVSSCQQLAVSPMCAWCSDEALPLGSPRCDLKEN
LLKDNCAPIESIEFPVSEARVLEDRPLSDKSGDSSQVTQVSPQRALRLRPDDSKNFSIQVRQVEDYPV
DIYLYLMDLSYSMKDDLWSIQNLGTLATQMRKLTSLNRIGFGAFVDKPVSPYMYISPPEALENPCYDMK
TTCLPMFGYKHVLTLDQVTRFNEEVKKQSVSRNRDAPEGGFDAIMQATVCDEKIGWRNDASHLLVFTT
DAKTHIALDGRLAGIVQPNMGQCHVGSNDHYSASTTMDYPSLGLMTEKLSQKNINLIFAVTENVNLYQ
NYSELIPGTTVGVLSMDSSNLQLIVDAYGKIRSKVELEVRDLPEELSLSFNATCLNNEVIPGLKSCMG
LKIGDTVSFSIEAKVRGCPQEKEKSFTIKPVGFKDSLIVQVTFDCDCACQAQAEPNSHRCNNGNGTFEC
GVCRCGPWLGSQLCECEDYRPSQQDECSREGQPVCSQRGECLCGQCVCHSSDFGKITGKYCECDDF
SCVRYKMGEMCSGHGQCSCGDCLCSDWTGYCNCCTTRTDCMSSNLLCSGRGKCECGSCVCIQPGSYG
DTCEKPTCPDACTFKKECVECKKFDRLGALHDENTCNRYCRDEIESVKELKDTGKDAVNCTYKNEDDCV
VRFQYEDSSGKSILYWEEPECPKGPDIWLLSVMGAILLIGLAALLIWKLLITIHDRKEFAKFEED
RARAKWDTANNPLYKEATSTFTNITYRGT
SGPTRTRPLEQKLISEEDLAANDILDYKDDDDKV

Recombinant protein using RC221606 also available, [TP321606](#)

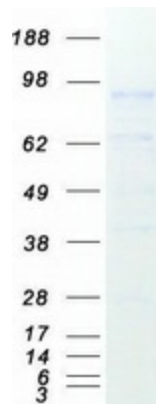
Tag:	C-Myc/DDK
Predicted MW:	84.3 kDa
Concentration:	>0.05 µg/µL as determined by microplate BCA method
Purity:	> 80% as determined by SDS-PAGE and Coomassie blue staining
Buffer:	25 mM Tris-HCl, 100 mM glycine, pH 7.3, 10% glycerol
Preparation:	Recombinant protein was captured through anti-DDK affinity column followed by conventional chromatography steps.



[View online »](#)

Note:	For testing in cell culture applications, please filter before use. Note that you may experience some loss of protein during the filtration process.
Storage:	Store at -80°C.
Stability:	Stable for 12 months from the date of receipt of the product under proper storage and handling conditions. Avoid repeated freeze-thaw cycles.
RefSeq:	NP_000203
Locus ID:	3690
UniProt ID:	P05106
RefSeq Size:	4894
Cytogenetics:	17q21.32
RefSeq ORF:	2364
Synonyms:	BDPLT2; BDPLT16; BDPLT24; CD61; GP3A; GPIIIa; GT; GT2
Summary:	The ITGB3 protein product is the integrin beta chain beta 3. Integrins are integral cell-surface proteins composed of an alpha chain and a beta chain. A given chain may combine with multiple partners resulting in different integrins. Integrin beta 3 is found along with the alpha IIb chain in platelets. Integrins are known to participate in cell adhesion as well as cell-surface mediated signalling. [provided by RefSeq, Jul 2008]
Protein Families:	Druggable Genome, ES Cell Differentiation/IPS, Transmembrane
Protein Pathways:	Arrhythmogenic right ventricular cardiomyopathy (ARVC), Dilated cardiomyopathy, ECM-receptor interaction, Focal adhesion, Hematopoietic cell lineage, Hypertrophic cardiomyopathy (HCM), Regulation of actin cytoskeleton

Product images:



Coomassie blue staining of purified ITGB3 protein (Cat# [TP321606]). The protein was produced from HEK293T cells transfected with ITGB3 cDNA clone (Cat# [RC221606]) using MegaTran 2.0 (Cat# [TT210002]).