

Product datasheet for **TP321599M**

CD1 (CD1A) (NM_001763) Human Recombinant Protein

Product data:

Product Type:	Recombinant Proteins
Description:	Recombinant protein of human CD1a molecule (CD1A), 100 µg
Species:	Human
Expression Host:	HEK293T
Expression cDNA Clone or AA Sequence:	>RC221599 representing NM_001763 Red =Cloning site Green =Tags(s)
	<p>MLFLLLPLLAVLPGDGNADGLKEPLSFHVIWIASFYNSHWKQNLVSGWLSLQHTHTWDSNSSTIVFLWPW SRGNFSNEEWKELETLFRIRTIRSFEGIRRYAHELQFEYPFEIQVTGGCELHSGKVSFSLQLAYQGSDF VSFQNNSWLPYPVAGNMAKHFKVLNQNQHENDITHNLLSDTCPRFILGLLDAGKAHLQRQVKPEAWLSH GPSPGPGHLQLVCHVSGFYKPKVWMMWRGEQEQQGTQRGDILPSADGTWYLRATLEVAAGEAADLSCRV KHSSLEGQDIVLYWEHHSSVGFILAVIVPLLLLIGLALWFRKRCFC</p> <p>TRTRPLEQKLISEEDLAANDILDYKDDDDKV</p>
Tag:	C-Myc/DDK
Predicted MW:	35.2 kDa
Concentration:	>0.05 µg/µL as determined by microplate BCA method
Purity:	> 80% as determined by SDS-PAGE and Coomassie blue staining
Buffer:	25 mM Tris-HCl, 100 mM glycine, pH 7.3, 10% glycerol
Preparation:	Recombinant protein was captured through anti-DDK affinity column followed by conventional chromatography steps.
Note:	For testing in cell culture applications, please filter before use. Note that you may experience some loss of protein during the filtration process.
Storage:	Store at -80°C.
Stability:	Stable for 12 months from the date of receipt of the product under proper storage and handling conditions. Avoid repeated freeze-thaw cycles.
RefSeq:	<u>NP_001754</u>
Locus ID:	909



[View online »](#)

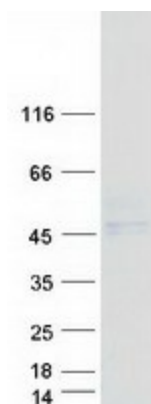
UniProt ID: [P06126](#)
RefSeq Size: 2072
Cytogenetics: 1q23.1
RefSeq ORF: 981
Synonyms: CD1; FCB6; HTA1; R4; T6

Summary: This gene encodes a member of the CD1 family of transmembrane glycoproteins, which are structurally related to the major histocompatibility complex (MHC) proteins and form heterodimers with beta-2-microglobulin. The CD1 proteins mediate the presentation of primarily lipid and glycolipid antigens of self or microbial origin to T cells. The human genome contains five CD1 family genes organized in a cluster on chromosome 1. The CD1 family members are thought to differ in their cellular localization and specificity for particular lipid ligands. The protein encoded by this gene localizes to the plasma membrane and to recycling vesicles of the early endocytic system. Alternative splicing results in multiple transcript variants. [provided by RefSeq, Mar 2016]

Protein Families: Druggable Genome, Transmembrane

Protein Pathways: Hematopoietic cell lineage

Product images:



Coomassie blue staining of purified CD1A protein (Cat# [TP321599]). The protein was produced from HEK293T cells transfected with CD1A cDNA clone (Cat# [RC221599]) using MegaTran 2.0 (Cat# [TT210002]).