

Product datasheet for **TP321598L**

TGIF2LY (NM_139214) Human Recombinant Protein

Product data:

Product Type:	Recombinant Proteins
Description:	Recombinant protein of human TGFB-induced factor homeobox 2-like, Y-linked (TGIF2LY), 1 mg
Species:	Human
Expression Host:	HEK293T
Expression cDNA Clone or AA Sequence:	>RC221598 representing NM_139214 Red =Cloning site Green =Tags(s) MEAAADGPAETQSPVEKDSPAQTQSPAQDTSIMSRNNADTGRVLALPEHKKKRGKGNLPAESVKILRDWM Y KHRFKAYPSEEEKQMLSEKTNLSLLRISNWFINARRRILPDMLQRRNDPIIGHKTGKDAHATHLQSTEA SVPKSGPVVQTMKYACPCGPCQRARCQERSNQIRSRPLARSSPE TRTRPLEQKLISEEDLAANDILDYKDDDDKV
Tag:	C-Myc/DDK
Predicted MW:	20.6 kDa
Concentration:	>0.05 µg/µL as determined by microplate BCA method
Purity:	> 80% as determined by SDS-PAGE and Coomassie blue staining
Buffer:	25 mM Tris-HCl, 100 mM glycine, pH 7.3, 10% glycerol
Preparation:	Recombinant protein was captured through anti-DDK affinity column followed by conventional chromatography steps.
Note:	For testing in cell culture applications, please filter before use. Note that you may experience some loss of protein during the filtration process.
Storage:	Store at -80°C.
Stability:	Stable for 12 months from the date of receipt of the product under proper storage and handling conditions. Avoid repeated freeze-thaw cycles.
RefSeq:	<u>NP_631960</u>
Locus ID:	90655



[View online »](#)

UniProt ID: [Q8IUE0](#)

RefSeq Size: 880

Cytogenetics: Yp11.2

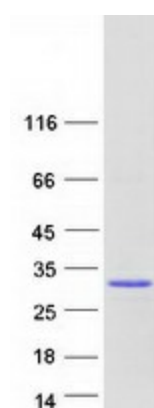
RefSeq ORF: 555

Synonyms: TGIFLY

Summary: This gene encodes a member of the TALE/TGIF homeobox family of transcription factors. This gene lies within the male specific region of chromosome Y, in a block of sequence that is thought to be the result of a large X-to-Y transposition. The C-terminus of this protein is divergent from that of its chromosome X homolog (TGIF2LX), suggesting that this protein may act as a regulator of TGIF2LX. [provided by RefSeq, Jul 2008]

Protein Families: Transcription Factors

Product images:



Coomassie blue staining of purified TGIF2LY protein (Cat# [TP321598]). The protein was produced from HEK293T cells transfected with TGIF2LY cDNA clone (Cat# [RC221598]) using MegaTran 2.0 (Cat# [TT210002]).