

Product datasheet for **TP321598**

TGIF2LY (NM_139214) Human Recombinant Protein

Product data:

| | |
|---------------------------------------|---|
| Product Type: | Recombinant Proteins |
| Description: | Recombinant protein of human TGFB-induced factor homeobox 2-like, Y-linked (TGIF2LY), 20 µg |
| Species: | Human |
| Expression Host: | HEK293T |
| Expression cDNA Clone or AA Sequence: | >RC221598 representing NM_139214 Red =Cloning site Green =Tags(s) MEAAADGPAETQSPVEKDSPAQTQSPAQDTSIMSRNNADTGRVLALPEHKKKRGKGNLPAESVKILRDWM Y KHRFKAYPSEEEKQMLSEKTNLSLLRISNWFNARRRILPDMLQRRNDPIIGHKTGKDAHATHLQSTEA SVPKSGPVVQTMKYACPCGPCQRARCQERSNQIRSRPLARSSPE TRTRPLEQKLISEEDLAANDILDYKDDDDKV |
| Tag: | C-Myc/DDK |
| Predicted MW: | 20.6 kDa |
| Concentration: | >0.05 µg/µL as determined by microplate BCA method |
| Purity: | > 80% as determined by SDS-PAGE and Coomassie blue staining |
| Buffer: | 25 mM Tris-HCl, 100 mM glycine, pH 7.3, 10% glycerol |
| Preparation: | Recombinant protein was captured through anti-DDK affinity column followed by conventional chromatography steps. |
| Note: | For testing in cell culture applications, please filter before use. Note that you may experience some loss of protein during the filtration process. |
| Storage: | Store at -80°C. |
| Stability: | Stable for 12 months from the date of receipt of the product under proper storage and handling conditions. Avoid repeated freeze-thaw cycles. |
| RefSeq: | <u>NP_631960</u> |
| Locus ID: | 90655 |



[View online »](#)

UniProt ID: [Q8IUE0](#)

RefSeq Size: 880

Cytogenetics: Yp11.2

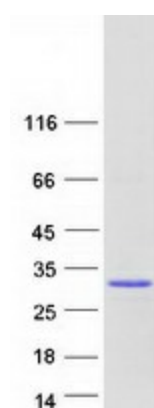
RefSeq ORF: 555

Synonyms: TGIFLY

Summary: This gene encodes a member of the TALE/TGIF homeobox family of transcription factors. This gene lies within the male specific region of chromosome Y, in a block of sequence that is thought to be the result of a large X-to-Y transposition. The C-terminus of this protein is divergent from that of its chromosome X homolog (TGIF2LX), suggesting that this protein may act as a regulator of TGIF2LX. [provided by RefSeq, Jul 2008]

Protein Families: Transcription Factors

Product images:



Coomassie blue staining of purified TGIF2LY protein (Cat# TP321598). The protein was produced from HEK293T cells transfected with TGIF2LY cDNA clone (Cat# [RC221598]) using MegaTran 2.0 (Cat# [TT210002]).