

Product datasheet for **TP321597M**

Fibulin 1 (FBLN1) (NM_006486) Human Recombinant Protein

Product data:

Product Type:	Recombinant Proteins
Description:	Recombinant protein of human fibulin 1 (FBLN1), transcript variant D, 100 µg
Species:	Human
Expression Host:	HEK293T
Expression cDNA Clone or AA Sequence:	>RC221597 representing NM_006486 Red =Cloning site Green =Tags(s)

MERAAPSRRVPLPLLLLGGGLALLAAGVDADVLLLEACCADGHRMATHQKDCSLPYATESKECRMVQEQCCH
SQLEELHCATGISLANEQDRCATPHGDNASLEATFVKRCCHCCLLGRAAQAQGSCEYSLMVGYYQCGQVF
RACCVKSQETGDLVDVGGGLQETDKIIEVEEQEDPYLNDRRCRGGGPKQQRDTGDEVVCSFVGYQLLSD
GVSCEDVNECITGSHSCLGESCINTVGSFRCQRDSSCGTYELTEDNSCKDIDECESGIHNCLPDFICQ
NTLGSFRCRPKLQCKSGFIQDALGNCIDINECLISAPCIIGHTCINTEGSYTCQKNVPNCGRGYHLNEE
GTRCVDVDECAPPAEPCGKGHRCVNSPGSFRCECKTGYFDGISRMCVDVNECQRYPGRLCGHKCENTLG
SYLCSCSVGFRLSVDGRSCEDINECSSSPCSQECANVYGSYQCYCRRGYQLSDVDGVTCEIDICALPTG
GHICSYRCINIPGSFQCSCPSSGYRLAPNGRNCQDIDECVTGIHNCSINETCFNIQGGFRCLAFCEPENY
RRSAATLQEKTDTVRCIKSCRPNVDTCVFDPVHTISHTVISLPTFREFTRPEEIIFLRAITPPHPASQA
NIIFDITEGNLRDSFDIIKRYMDGMTVGVRQVRPIVGPFHAVLKLEMNYVGGVWSHRNVNVHIFVSE
YWF

TRTRPLEQKLISEEDLAANDILDYKDDDDKV

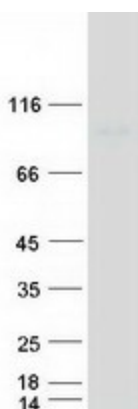
Tag:	C-Myc/DDK
Predicted MW:	74.6 kDa
Concentration:	>0.05 µg/µL as determined by microplate BCA method
Purity:	> 80% as determined by SDS-PAGE and Coomassie blue staining
Buffer:	25 mM Tris-HCl, 100 mM glycine, pH 7.3, 10% glycerol
Preparation:	Recombinant protein was captured through anti-DDK affinity column followed by conventional chromatography steps.
Note:	For testing in cell culture applications, please filter before use. Note that you may experience some loss of protein during the filtration process.
Storage:	Store at -80°C.



[View online »](#)

Stability:	Stable for 12 months from the date of receipt of the product under proper storage and handling conditions. Avoid repeated freeze-thaw cycles.
RefSeq:	NP_006477
Locus ID:	2192
UniProt ID:	P23142 , Q8NBH6
RefSeq Size:	2947
Cytogenetics:	22q13.31
RefSeq ORF:	2109
Synonyms:	FBLN; FIBL1
Summary:	Fibulin 1 is a secreted glycoprotein that becomes incorporated into a fibrillar extracellular matrix. Calcium-binding is apparently required to mediate its binding to laminin and nidogen. It mediates platelet adhesion via binding fibrinogen. Four splice variants which differ in the 3' end have been identified. Each variant encodes a different isoform, but no functional distinctions have been identified among the four variants. [provided by RefSeq, Jul 2008]
Protein Families:	Secreted Protein

Product images:



Coomassie blue staining of purified FBLN1 protein (Cat# [TP321597]). The protein was produced from HEK293T cells transfected with FBLN1 cDNA clone (Cat# [RC221597]) using MegaTran 2.0 (Cat# [TT210002]).