

Product datasheet for **TP321580M**

CED6 (GULP1) (NM_016315) Human Recombinant Protein

Product data:

Product Type:	Recombinant Proteins
Description:	Recombinant protein of human GULP, engulfment adaptor PTB domain containing 1 (GULP1), 100 µg
Species:	Human
Expression Host:	HEK293T
Expression cDNA Clone or AA Sequence:	>RC221580 representing NM_016315 Red =Cloning site Green =Tags(s)

MNRAFSRKKDKTWMHTPEALSKHFIPYNAKFLGSTEVEQPKGTEVVRDAVRKLFKARHIKKSEGQKIPKV
ELQISYGVKILEPKTKEVQHNCQLHRISFCADDKTDKRIFTFICKDSESNKHLCYVFDSEKCAEEITLT
IGQAFDLAYRKFLSEGGKDVETRKQIAGLQKRIQDLETENMELKNKVQDLENQLRITQVSAPPAGSMTPK
SPSTDIFDMIPFSPISHQSSMPTRNGTQPPPVPSRSTEIKRDLFGAEPFDPFNCGAADFPDIQSKLDEM
QEGFKMGLTLEGTVFCLDPLDSRC

TRTRPLEQKLISEEDLAANDILDYKDDDDKV

Tag:	C-Myc/DDK
Predicted MW:	34.3 kDa
Concentration:	>0.05 µg/µL as determined by microplate BCA method
Purity:	> 80% as determined by SDS-PAGE and Coomassie blue staining
Buffer:	25 mM Tris-HCl, 100 mM glycine, pH 7.3, 10% glycerol
Preparation:	Recombinant protein was captured through anti-DDK affinity column followed by conventional chromatography steps.
Note:	For testing in cell culture applications, please filter before use. Note that you may experience some loss of protein during the filtration process.
Storage:	Store at -80°C.
Stability:	Stable for 12 months from the date of receipt of the product under proper storage and handling conditions. Avoid repeated freeze-thaw cycles.
RefSeq:	<u>NP_057399</u>
Locus ID:	51454



[View online »](#)

UniProt ID: [Q9UBP9](#)

RefSeq Size: 3464

Cytogenetics: 2q32.1-q32.2

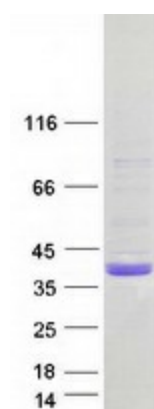
RefSeq ORF: 912

Synonyms: CED-6; CED6; GULP

Summary: The protein encoded by this gene is an adapter protein necessary for the engulfment of apoptotic cells by phagocytes. Several transcript variants, some protein coding and some thought not to be protein coding, have been found for this gene. [provided by RefSeq, Nov 2011]

Protein Families: Druggable Genome

Product images:



Coomassie blue staining of purified GULP1 protein (Cat# [TP321580]). The protein was produced from HEK293T cells transfected with GULP1 cDNA clone (Cat# [RC221580]) using MegaTran 2.0 (Cat# [TT210002]).